



LANGUAGES



INSTRUCTION MANUAL



PUNISHER 4

- Download the latest version of the manual from www.corally.com
- Téléchargez la dernière version du manuel à partir de www.corally.com
- Laden Sie die neueste Version des Handbuchs von www.corally.com herunter.
- Download de nieuwste versie van de handleiding van www.corally.com



C-00292_Manual-V1

<https://corally.com/en/useful-links/downloads-manuals>

WWW.CORALLY.COM

INTRODUCTION*



Thank you for purchasing a Team Corally car. This manual describes the instructions for using the model and the electronic components. You will also find some tips on how to maintain your RC model so that you can enjoy it for years to come. You have purchased one of the most efficient models available on the market that has been designed by a team of professionals. You will also benefit from the best after-sales support. All Team Corally models guarantee a high quality of manufacture and performance that guarantees you a high satisfaction of use and services provided by the Team Corally. Always take the time to read the instructions carefully in order to follow all the procedures to use your RC model safely for you and for other people and property in the area. This will allow you to take full advantage of all the performance of your RC model.

Please also check the website www.corally.com/Downloads/ to check if you have the latest version of this instruction manual. (Version: see bottom cover of this manual)

If you have any questions about the model and its components, you can send a message to info@corally.com

We also recommend that you get help from an experienced model maker or your dealer.

You will find all the references of the spare parts on the website www.corally.com

TERM OF USE

The user is responsible for the use of your model. The user assumes all risks associated with the use of the model. This model is not intended for use by children under 14 years of age without the supervision of a responsible adult who is familiar with the dangers of using a RC model. Team Corally / JSP Group Intl bvba, its manufacturers, distributors and resellers cannot control the use and load of the model and therefore cannot be held responsible for any damage to property and damage caused to persons resulting from the use of this product. You must accept these conditions and consider yourself fully responsible for the use of this product. If not, do not use this product.

Due to the continuous development of our products, the exact specifications of the kit may vary. If you have a problem with your new kit, please contact the store where you purchased it, indicating the part number(s).

Team Corally / JSP Group Intl bvba reserves the right to change any specification without notice. All rights reserved.

READ FIRST*

This owner's manual is designed for use with your vehicle and contains the instructions you will need to operate and maintain your vehicle.

- We know you want to start driving immediately after unpacking, but it is very important that you take the time to read this manual carefully, even if you are an experienced R/C driver.
- Read carefully and follow all instructions in this manual. Failure to comply with the instructions will be considered as abuse and/or negligence which may result in the cancellation of the warranty.
- Your vehicle is designed to operate on uneven terrain. However, dust, sand, water and carpet fibres can get into your car's work-spaces and can damage your vehicle if they are not removed quickly. We do not guarantee any warranty on your vehicle against damage caused by external elements such as sand, dirt or water. Users are responsible for the maintenance and safe operation of this vehicle.
- This product is not a toy. It is not suitable for users under 14 years of age, unless they are supervised by adults.
- Never attempt to disassemble electronic components. These have been carefully calibrated at the factory.
- Only improve your car with parts made for your car. If you upgrade performance, replace the entire system (such as the motor, inverter, battery, etc.) so that all components are properly adapted. Any malfunction resulting from a custom modification will void your warranty.
- Before driving your vehicle, please read this manual in its entirety and examine your vehicle and radio control system for any defects.
- For better performance, some adjustments may be necessary.
- This vehicle requires a battery (not included in the car or in the packaging). Make sure the vehicle's battery is sufficiently charged before driving, otherwise you may lose control of the vehicle.
- The radio transmitter requires 4 AA batteries (not included)
- Always remove or disconnect the battery from the vehicle to the inverter when not in use.
- Please drive your car in a spacious place. Never drive your car on the street or in traffic. Public places are subject to specific legislation by country, city, municipality, please comply with the legislation for the use of RC models in your region.
- This product is fully assembled in the factory. We accept no liability for damage and/or accidents resulting from custom modifications and/or malfunctions.

SAFETY PRECAUTIONS*

For your safety, always use wear gloves and goggles when assembling and maintaining your model.

Always take all necessary precautions when handling products (silicone oil, grease, thread lock, cyanolyte glue, fuel) for the operation of the model. (Refer to the manufacturer's instructions)

For your safety, to keep the warranty and obtain the best performance, always use original CORALLY genuine parts.

Contains: LEAD (CAS 7439-92-1) ANTIMONY (CAS 7440-36-0)

WARNING: This product contains a chemical known to the state of California to cause cancer and birth defects or other reproductive harm.

CAUTION: CANCER HAZARD

Contains lead, a listed carcinogen. Lead is harmful if ingested. Wash thoroughly after using.

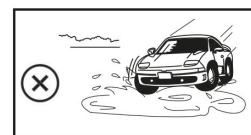
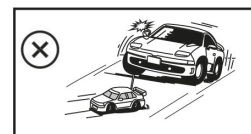
DO NOT use product while eating, drinking or smoking.

USE PRECAUTIONS*



Failure to operate your model in a safe and responsible manner may result in injury to yourself, others or damage to property around you.

- Do not use your model on public roads or in areas where you may encounter pedestrians or riders.
- Do not operate in a congested area or in crowds.
- Do not operate in areas where loud noises can disturb others, such as hospitals and residential areas.
- Do not operate your model with obstructed line of sight, at night or near water.
- Your model is radio controlled, it is subject to possible radio interference. Radio interference can cause loss of control of your model. Be careful.
- Take care not to injure yourself while using tools to adjust or upgrade your model.
- Since the model contains small parts, keep out of reach of children while assembling and/or disassembling your model.
- If your model becomes stuck against an object, release the throttle and retrieve it by hand
- Do not continue to apply the throttle when your model is stuck. This may damage the motor and/or ESC/ Receiver unit.
- Turn OFF your model and don't use it if it runs erratically. Please do not use your model again until the problem has been solved.
- Keep the wheels of the model off the ground when checking the operation of the radio equipment.
- When learning to operate your model, go to an area that has no obstacles that can damage your model.
- Before and after each use, check all the screws on the model.
- To maintain the best performance, check that all moving parts move freely.



Take all necessary precautions before, during and after using your model. You are responsible for the safe assembly, maintenance and use of your model.

In case of any questions, contact your local reseller or contact Team Corally support for assistance.

LIPO BATTERY SAFETY PRECAUTIONS**

- Follow and respect the manufacturer's instructions for use
- It is important to check that your ESC is set to LIPO if you are using a LIPO battery. Failure to comply with this instruction will result in increased battery discharge and may cause fire and damage to persons and property.
- When charging or storing LiPo batteries always use LiPo Safety Bag (Flame retardant).
- Always respect the maximum rate and voltage specified by the battery manufacturer.
- Charge the LIPO battery outdoors or in a ventilated area away from flammable objects and surfaces.
- NEVER leave your LiPo battery unattended while charging.
- If the battery swells during charging, stop charging immediately and disconnect the battery from the charger. Leave the battery outside for a few hours and observe. Then recycle the battery according to the instructions of your country/region. Never dispose of a LIPO battery with domestic waste.
- Before recycling your defective battery, it must be neutralized. Take a plastic container, fill it with water and add a lot of salt until the water becomes opaque. Place the LIPO battery in the water and leave for 24 hours. Check with a voltmeter that the voltage is 0.0V. Then recycle the battery according to local regulations.
- Never charge a damaged or inflated battery.
- Never discharge the battery cells below 3.2V.
- Always use the appropriate balancer/charger when charging your LiPo battery pack.
- When the battery is empty, check the temperature of the battery before charging it. If the battery is very hot, wait until it cools before charging it.
- Never charge a very hot battery as this may cause an explosion or fire.
- When the battery is empty, recharge it immediately. Do not store an empty battery, the battery will continue to discharge, it will fall below the minimum voltage and become unusable.



- **Téléchargez les consignes de sécurité et conditions de garantie en Français ici.**
- **Laden Sie hier die Sicherheitshinweise und Garantiebedingungen in Deutsch herunter.**
- **Download hier de veiligheidsinstructies en garantievoorwaarden.**





If material defects or manufacturing faults should arise in a product distributed or manufactured by Team Corally / JSP Group Intl bvba, and purchased by a consumer, we Team Corally / JSP Group Intl bvba acknowledge the obligation to correct those faults or defects within the limitations described below. This manufacturer's warranty is in addition to, and does not affect, the legal or contractual rights of the consumer which arise from the purchase of such products. Team Corally / JSP Group Intl bvba guarantees the consumer that its products are free from material, manufacturing, and construction faults, as determined by the general state of knowledge and technology valid at the time of manufacturing. The fault responsible for causing the damage must be proven to have been present in the product at this time. Claims for compensation arising from consequential damage or product liability will not be considered valid unless they fall under peremptory provisions of the law. If material defects or manufacturing faults should arise in a product distributed or manufactured by Team Corally / JSP Group Intl bvba in the European community (EC) and purchased by a consumer, then Team Corally / JSP Group Intl bvba undertakes to correct those defects within the limitations described below. This manufacturer's declaration does not affect the consumer's legal or contractual rights regarding defects arising from the purchase contract between the consumer and the dealer or reseller. **Extend of the Warranty**

If a claim is made under warranty, we take at our discretion to repair or replace the defective goods. We will not consider supplementary claims, especially for reimbursement of costs relating to the defect (e.g. installation / removal costs) and compensation for consequent damages unless they are allowed by statute. This does not affect claims on legal regulations, especially according to the product liability law.

Provisions of the Warranty

The purchaser is required to make the warranty claim in writing, and must enclose original proof of purchase (e.g. invoice, receipt, delivery note) and the appropriate warranty card. He must send the defective goods to our local representatives or directly to Team Corally / JSP Group Intl bvba, Geelseweg 80, 2250 Olen, Belgium at his own risk and cost.

The purchaser should state the material defect or manufacturing fault, or symptoms of the fault, as accurate as possible, so that we can check if our warranty obligation is applicable. The goods are transported from the consumer to us, and from us to the consumer, entirely at the risk and cost of the consumer.

Invalidation of the Warranty

The consumer cannot make a claim under warranty when the fault is affecting the use of the product arising from natural wear, competition use, or improper use (including installation) or external forces. The consumer's adherence to the building and operating instructions relevant to the model, including the installation, operation, use of, and maintenance of, model-related components cannot be supervised by Team Corally / JSP Group Intl bvba. Therefore Team Corally / JSP Group Intl bvba is in no way liable for loss, damage, or costs resulting from improper use, or behaviour in any way connected to the above described provisions. Unless otherwise required by law, Team Corally / JSP Group Intl bvba is in no way whatever liable to provide compensation for damages arising from the improper use of the model (including personal injury, death, damage to buildings, loss of turnover, loss of business, or interruption of business, or any other direct, or indirectly caused, consequential damage).

Duration of Validity

The claim period is 24 months from the date of purchase of the product by the consumer from a dealer in the European Community (EC) counted from the date of purchase. The claim period is 12 months from the date of purchase of the product by the consumer from a dealer outside the European Community (EC) counted from the date of purchase. If a defect arises after the end of the claim period, or if evidence or documents required according to this declaration in order to make the claim valid are not presented until after this period, then the consumer forfeits any rights or claims from this declaration. The guarantee period is not prolonged by the granting of any claims within the framework of this warranty, especially in the case of repair or replacement. The guarantee period also does not restart in such cases.

Warranty Expiration

If we do not acknowledge the validity of a claim based on this declaration within the claim period, all claims based on this declaration will expire after six months from the time of registering the claim; however this cannot occur prior to the end of the claim period.

For any support, contact us at support.corally.com

DOWNLOAD MANUALS AND INSTRUCTIONS

Download the latest version of this manual and other instruction manuals about :

Electronics - LiPo Safety Instructions - Spare/Option parts ...

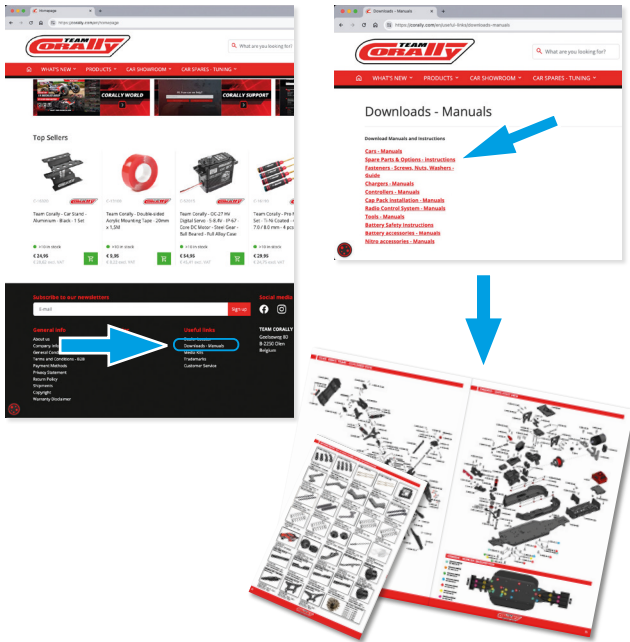
Téléchargez la dernière version de ce manuel et d'autres manuels d'instructions sur :
Electronique - LiPo Consignes de sécurité - Pièces détachées - Pièces en option ...

Laden Sie die neueste Version dieses Handbuchs und andere Anleitungen herunter über :
Elektronik - LiPo Sicherheitshinweise - Ersatzteile - Option Parts ...

Download de nieuwste versie van deze handleiding en andere instructiehandleidingen over:
Elektronica - LiPo Veiligheidsinstructies - Onderdelen - Optie Onderdelen ...

ALL INSTRUCTION MANUALS

Go to
<https://corally.com/en/useful-links/downloads-manuals>

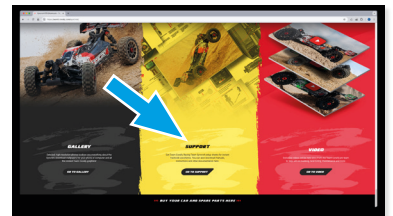


ONE PAGE MANUALS (Step by step manual)

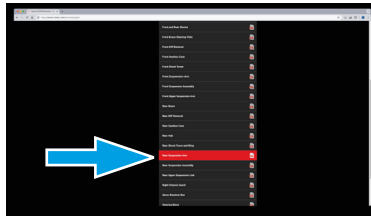
Go to <https://world.corally.com/>



Select your car and visit the showroom



Go to the bottom of the page and click on SUPPORT.



... and select a "One Page Manual"



KIT CONTENT



Transmitter



RTR Model with electronics



User Guides

REQUIRED FOR OPERATION (Not included)



4x AA Batteries for the Transmitter



3S - 11.1V LiPo Battery - Soft case
 4S - 14.8V LiPo Battery - Soft case



Charger : C-51025 - ULTRA-X 80



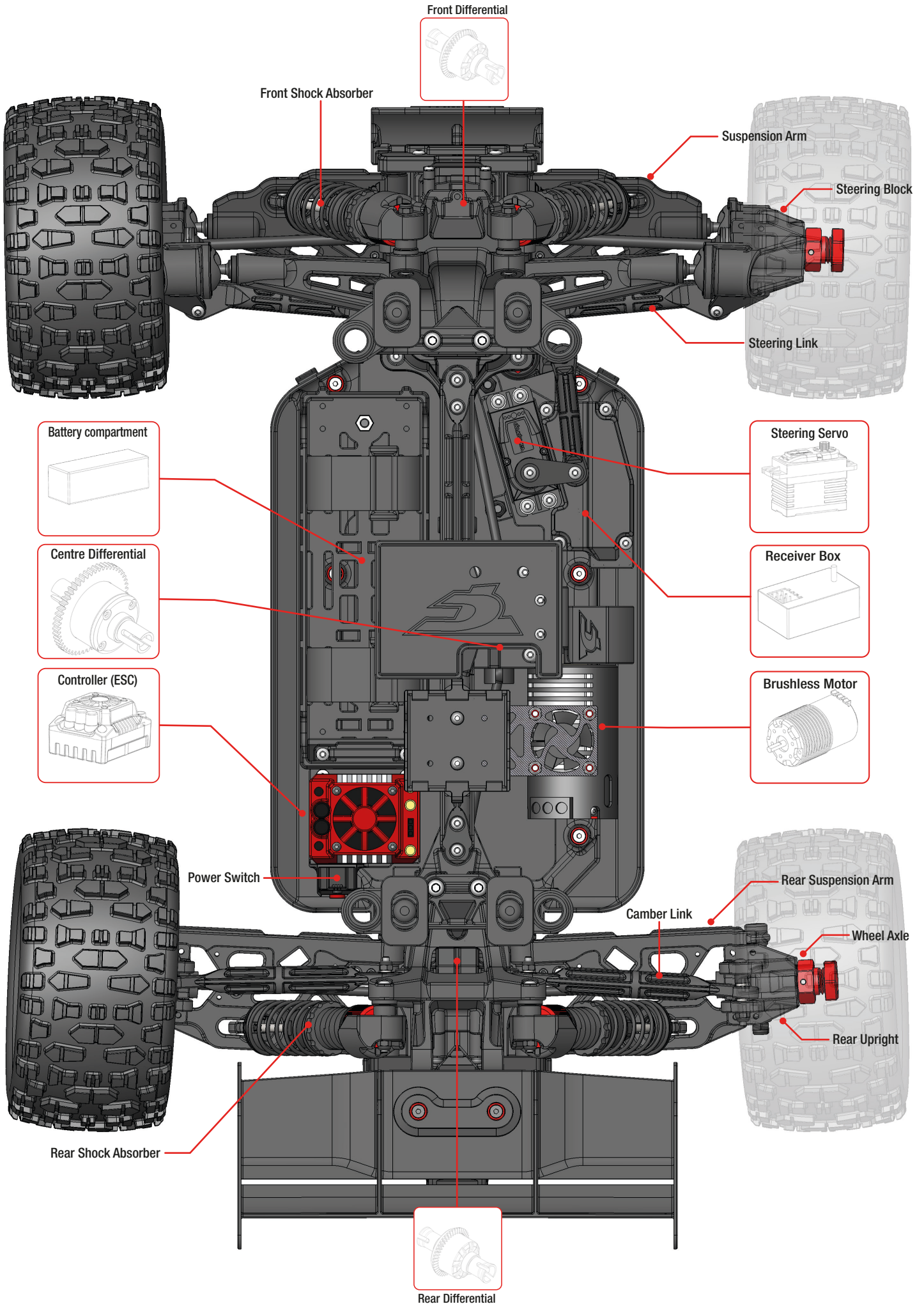
C-16185
 Hex Tool Set - 1.5 / 2.0 / 2.5 / 3.0 mm



C-16190
 Nut Driver Set - 4.0 / 5.5 / 7.0 / 8.0 mm

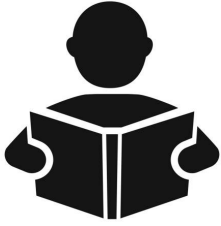


Silicone Oil - Grease - Thread lock (for maintenance)





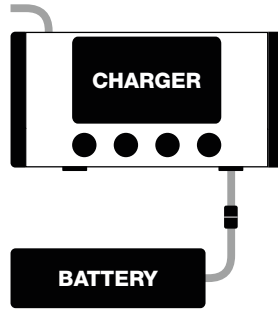
READ THE INSTRUCTIONS



Instruction

- Lisez les instructions
- Lesen Sie die Anleitung
- Lees de instructies

CHARGE THE BATTERY



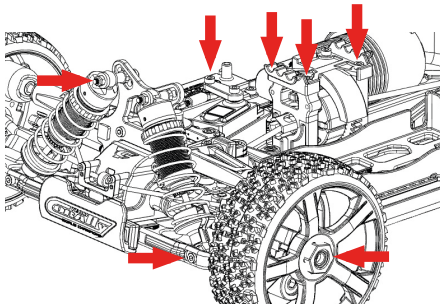
- Chargez la batterie
- Laden Sie den Akku
- De batterij opladen

INSTALL 4x AA BATTERY - 1.5V



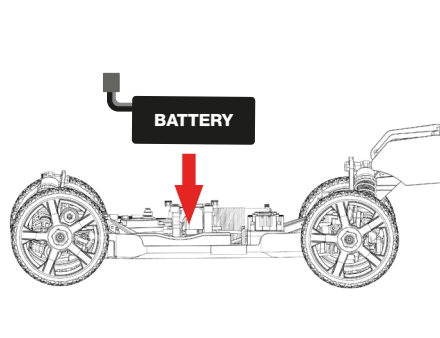
- Installez les piles dans l'émetteur
- Setzen Sie die Batterien in den Sender ein
- Plaats de batterijen in de zender

MAKE SURE THAT ALL SCREWS AND NUTS ARE TIGHTENED PROPERLY.



- Vérifiez le serrage des vis et écrous
- Überprüfen Sie die Schrauben und Muttern auf festen Sitz
- Controleer de vastheid van de schroeven en moeren

INSTALL THE FULLY CHARGED BATTERY



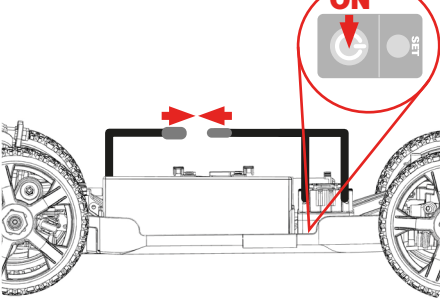
- Installez la batterie chargée
- Setzen Sie den geladenen Akku ein
- Installeer de opgeladen batterij

TURN ON THE TRANSMITTER (Always First)



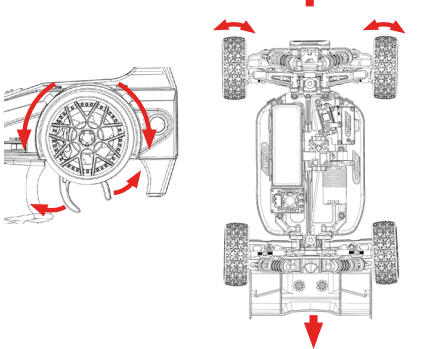
- Allumez l'émetteur (Toujours en premier)
- Schalten Sie den Sender ein (Immer zuerst)
- Zet de zender aan (altijd eerst)

CONNECT THE BATTERY TO THE ESC SWITCH ON THE ESC



- Connectez la batterie au variateur et allumez-le
- Schließen Sie den Akku an den Regler an und schalten Sie ihn ein
- Sluit de accu aan op de regelaar en schakel deze in

CHECK THE FUNCTIONS



- Contrôlez les fonctions
- Kontrollieren Sie die Funktionen
- Controle van de functies

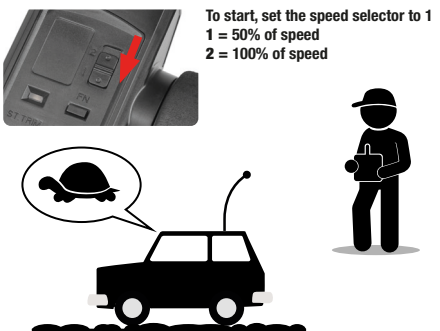
CHECK THE RADIO SYSTEM RANGE



Move away from the max. distance you will drive the vehicle. Check that the vehicle responds properly to the controls. If not, reduce the distance or change the driving location.

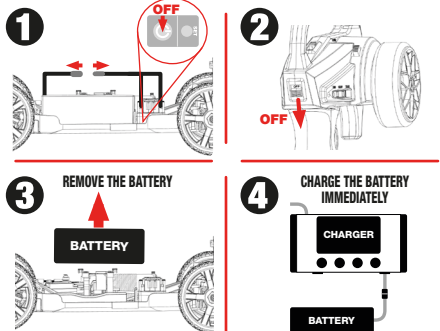
- Contrôlez la portée de l'émetteur
- Überprüfen Sie die Reichweite des Senders
- Controleer het bereik van de zender

DRIVE SLOWLY TO BEGIN



- Pour débuter placez le sélecteur de vitesse sur 1
- Um zu beginnen, stellen Sie den Geschwindigkeitswahlschalter auf 1
- Zet om te beginnen de snelheidskeuzeknop op 1

WHEN FINISHING

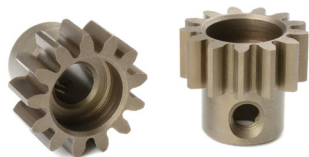


- Après, débranchez la batterie et rechargez-la immédiatement.
- Trennen Sie den Akku ab und laden Sie ihn sofort wieder auf.
- Ontkoppel dan de batterij en laad deze onmiddellijk op.

CLEAN AND MAINTAIN YOUR VEHICLE



- Nettoyez et entretenez votre voiture !
- Reinigen und pflegen Sie Ihr Auto!
- Reinigen en onderhoud uw auto!



MOTOR PINION MOD1.0 - PIGNON MOTEUR MOD1.0 - MOTORRITZEL MOD1.0 - MOTOR PINION MOD1.0

High-performance pinions gear, manufactured from special steel for toughness and durability with precise tolerances and assures unparalleled concentricity. Created on a special gear machine, all pinions feature ultra-precise tooth shaping and ultra-true running for vibration-free operation. Each pinion is marked with the tooth number for easy and quick identification. Fits all cars with MOD1 gears.

Pignons Haute Performance, fabriqué en acier spécial avec des tolérances précises pour garantir solidité, longévité et concentricité. Tous les pignons présentent une forme de dent ultra-précise pour un fonctionnement sans vibrations. Chaque pignon est marqué du nombre de dents pour une identification facile et rapide. Convient à toutes les voitures avec des transmissions MOD1)

Hochleistungs-Ritzel, hergestellt aus Spezialstahl mit präzisen Toleranzen, um Festigkeit, Haltbarkeit und Rundlauf zu gewährleisten. Alle Ritzel haben eine ultrapräzise Zahnform für einen vibrationsfreien Betrieb. Jedes Kettenrad ist zur schnellen und einfachen Identifizierung mit der Anzahl der Zähne gekennzeichnet. Passend für alle Fahrzeuge mit MOD1-Getriebe.

High-performance tandwiel, geproduceerd van speciaal staal met nauwkeurige toleranties om sterkte, duurzaamheid en concentriciteit te garanderen. Alle kettingwielen hebben een ultra-precieze tandvorm voor een trillingsvrije werking. Elk tandwiel is gemarkeerd met het aantal tanden voor een snelle en eenvoudige identificatie. Past op alle auto's met MOD1 versnellingen.

SPEED GEAR CHART - TABLEAU DES VITESSES - DREHZAHLGANGDIAGRAMM - VERSNELLINGSTABEL

GEAR RATIO : 3.31	Km/h	Mph	Km/h	Mph	Km/h	Mph
Gear	13T Pinion		15T Pinion		17T Pinion	
52T	13,23		11,47		10,75	
4S	70	43	80	50	86	53



Factory fitted

- Montage d'origine
- Werkseitig montiert
- Originele montage

Use with caution (control motor temperature)

- A utiliser avec précaution (contrôle de la température du moteur)
- Mit Vorsicht verwenden (Motortemperatur kontrollieren)
- Voorzichtig gebruiken (motortemperatuur controleren)

Not recommended with the standard motor

- Non recommandé avec le moteur standard
- Nicht empfohlen mit dem Standardmotor
- Niet aanbevolen met de standaardmotor

Note: The speed indicated in the table is a theoretical speed for information purposes. The real speed varies according to the type of terrain, electronic equipment, atmospheric conditions, type of tyre and its diameter and other driving parameters.

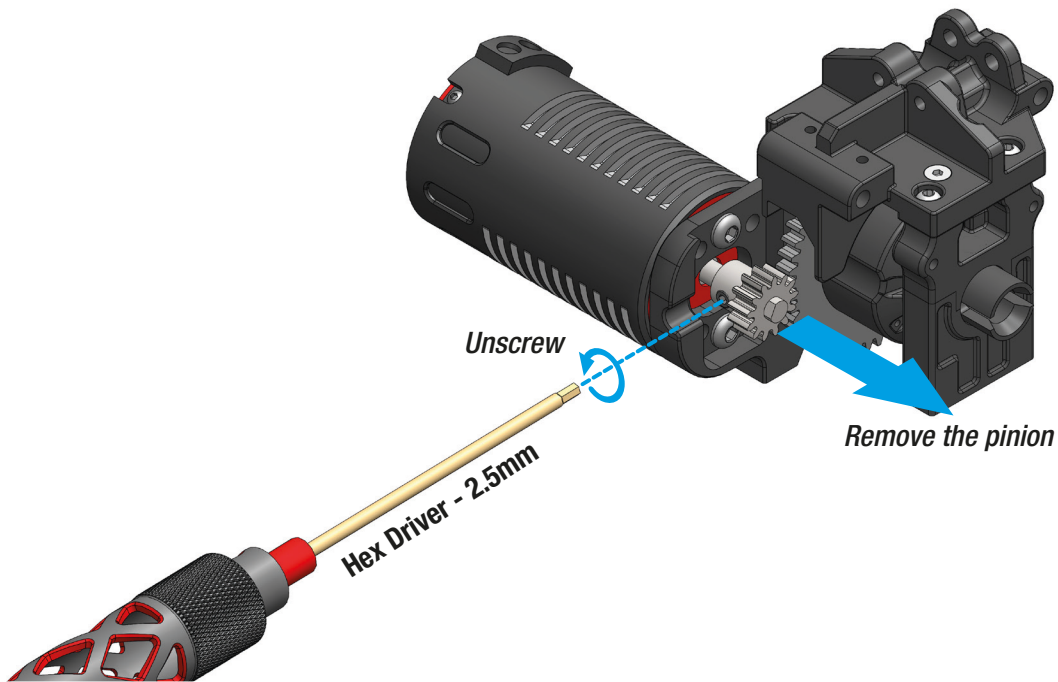
Note: La vitesse indiquée dans le tableau est une vitesse théorique à titre indicatif. La vitesse réelle varie en fonction du type de terrain, de l'équipement électronique, des conditions atmosphériques, du type de pneu et son diamètre et d'autres paramètres de conduite.

Bemerkung: Die in der Tabelle angegebene Geschwindigkeit ist eine theoretische Geschwindigkeit, die nur als Referenz dient. Die tatsächliche Geschwindigkeit hängt von der Art des Geländes, der elektronischen Ausrüstung, den Wetterbedingungen, des Reifentyps und seines Durchmessers und anderen Fahrparametern ab.

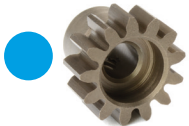
Nota: De in de tabel aangegeven snelheid is een theoretische snelheid, uitsluitend ter referentie. De werkelijke snelheid varieert afhankelijk van het soort terrein, de elektronische apparatuur, de weersomstandigheden, het type band en zijn diameter en andere rijparameters.



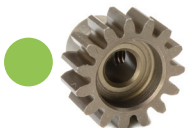
- You can change the transmission ratio by changing the motor pinion. You can choose from 3 sprocket sizes 13, 15 and 17 teeth. The 13-tooth pinion is factory fitted and allows you to ride on all types of rough terrain. The 15-tooth will allow you to drive a little faster on any terrain and the 17-tooth will make the car go even faster but be careful not to use it on very rough terrain with steep climbs, mud or high grass as the engine will make a lot of effort, risk to get hot and will consume more battery.
- Vous pouvez modifier le rapport de transmission en changeant le pignon moteur. Vous avez le choix de 3 tailles de pignon 13, 15 et 17 dents. Le pignon 13 dents est installé d'usine et permet de rouler sur tout type de terrain accidenté. Le 15 dents permet de rouler un peu plus vite en tout terrain et le 17 dents fera rouler la voiture encore plus vite mais attention à ne pas l'utiliser sur des terrains très accidentés, de la boue ou de l'herbe haute car le moteur fera beaucoup d'effort, risque de chauffer et consommera plus de batterie.
- Sie können das Übersetzungsverhältnis ändern, indem Sie das Motorritzel austauschen. Sie haben die Wahl zwischen drei Ritzelgrößen mit 13, 15 und 17 Zähnen. Das Ritzel mit 13 Zähnen ist ab Werk eingebaut und ermöglicht das Fahren auf allen Arten von unebenem Gelände. Das 15-Zahnrad ermöglicht es Ihnen, im Gelände etwas schneller zu fahren, und das 17-Zahnrad lässt Ihr Auto noch schneller fahren, aber achten Sie darauf, es nicht auf sehr unebenem Gelände mit starken Steigungen, Schlamm oder hohem Gras zu verwenden, da der Motor dann viel Kraft aufwenden muss, heiß laufen kann und mehr Batterie verbraucht.
- U kunt de overbrengingsverhouding veranderen door het motortandwiel te veranderen. U kunt kiezen uit 3 tandwielmaten 13, 15 en 17 tanden. Het 13-tands tandwiel is in de fabriek gemonteerd en maakt het mogelijk om op alle soorten ruw terrein te rijden. Met de 15-tands kunt u iets sneller rijden op elk terrein en met de 17-tands gaat de auto nog sneller, maar pas op dat u deze niet gebruikt op zeer ruw terrein met steile hellingen, modder of hoog gras, omdat de motor dan veel moeite doet, het risico loopt heet te worden en meer accu verbruikt.



- **Motor mounting holes to match pinion size.**
- Trous de fixation moteur en fonction de la taille du pignon.
- Befestigungslöcher des Motors je nach Größe des Ritzels.
- Motorbevestigingsgaten volgens rondselgrootte



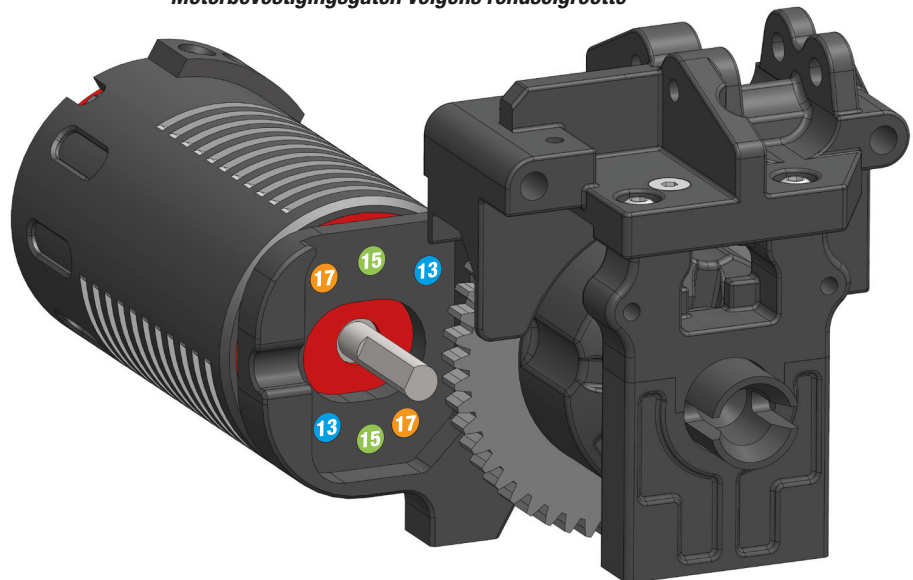
Pinion - 13 Teeth - Shaft Dia. 5mm
#C-72713



Pinion - 15 Teeth - Shaft Dia. 5mm
#C-72715



Pinion - 17 Teeth - Shaft Dia. 5mm
#C-72717



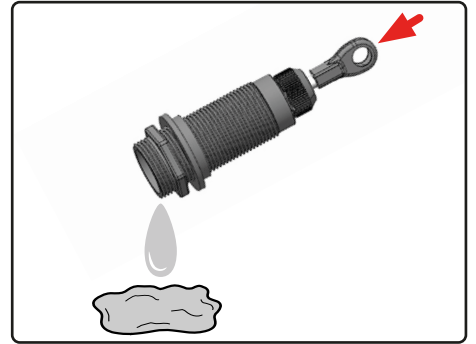
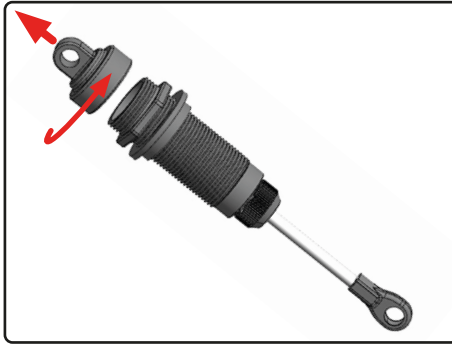
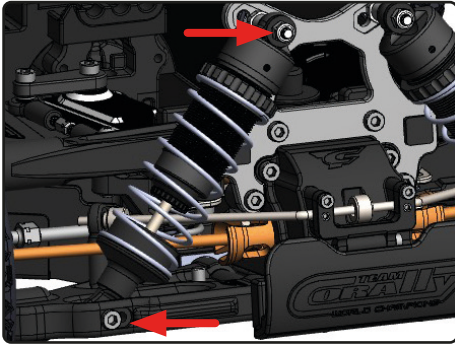


It may be necessary to replace the silicone oil in the shock absorbers every 40 runs (depends on how you drive and the type of terrain you drive on).

Il peut être nécessaire de remplacer l'huile silicone des amortisseurs toutes les 40 courses (cela dépend de votre conduite et du type de terrain sur lequel vous roulez).

Es kann notwendig sein, das Silikonöl in den Stoßdämpfern alle 40 Fahrten zu wechseln (abhängig von Ihrer Fahrweise und dem Gelände, auf dem Sie fahren).

Het kan nodig zijn de siliconenolie in de schokdempers om de 40 ritten te vervangen (afhankelijk van uw rijstijl en het soort terrein waarop u rijdt).



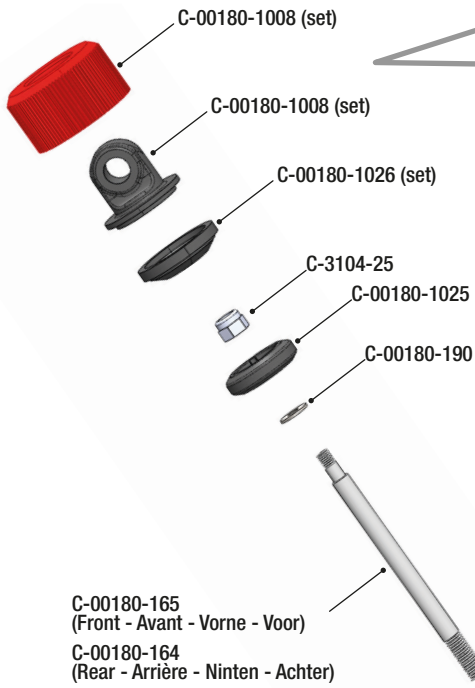
ALWAYS USE SILICONE OIL, NEVER USE ANY OTHER TYPES OF OIL.

FILL	MOVE UP	WAIT	TIGHTEN 50%	MOVE UP	TIGHTEN FULLY
<p>1 ↓</p>	<p>↑↓ 3-4x</p>	<p>↓ 5min</p>	<p>↻ 50%</p>	<p>↑ SLOWLY</p>	<p>↻ FULLY</p>
<ul style="list-style-type: none"> Fill the shock with silicone oil. Remplissez l'amortisseur avec de l'huile de silicone. Füllen Sie den Dämpfer mit Silikonöl. Vul de schokdemper met siliconenolie. 	<ul style="list-style-type: none"> Move the piston up&down (3-4) to release the air bubbles in the silicone oil. Déplacez le piston de haut en bas (3-4) pour libérer les bulles d'air. Bewegen Sie den Kolben nach oben&unten (3-4), um die Luftblasen abzulassen. Beweeg de zuiger op en neer (3-4) om de luchtbel-len te laten ontsnappen. 	<ul style="list-style-type: none"> Pull the Shock shaft down and wait until the bubbles rise to the surface. Tirez la tige d'amortisseur vers le bas et attendez que les bulles remontent à la surface. Ziehen Sie die Schockwelle nach unten und warten Sie, bis die Blasen an die Oberfläche steigen. Trek de Schokas naar beneden en wacht tot de luchtballen naar de oppervlakte stijgen. 	<ul style="list-style-type: none"> Screw in the shock absorber cap at 50%. Vissez le bouchon d'amortisseur à 50% Schrauben Sie die Stoßdämpferkappe zu 50 % ein. Schroef de dop van de schokdemper op 50%. 	<ul style="list-style-type: none"> Gently move the piston in upper position, the oil excess will flow out. Déplacez doucement le piston en position haute, l'excédent d'huile s'écoulera. Bewegen Sie den Kolben vorsichtig in die obere Position, das überschüssige Öl fließt dann heraus. Beweeg de piston langzaam in de bovenste positie, de overtollige olie zal eruit stromen. 	<ul style="list-style-type: none"> Now tighten the cap fully but not too much otherwise the membrane will be deformed. Maintenant, serrez le bouchon à fond, mais pas trop, sinon la membrane sera déformée. Ziehen Sie nun die Kappe vollständig, aber nicht zu fest an, da sonst die Membran verformt wird. Draai nu de dop helemaal vast, maar niet te vast, anders wordt het membraan vervormd.

	FRONT		REAR		SHOCK PISTON
	SILICONE OIL	SPRING TENSION	SILICONE OIL	SPRING TENSION	
TRACK USE	450CPS	4mm	400CPS	0mm	6 Holes Ø1.3mm
OFF-ROAD	600CPS	4mm	500CPS	0mm	6 Holes Ø1.3mm
FACTORY	1000CPS		1000CPS		6 Holes Ø1.3mm



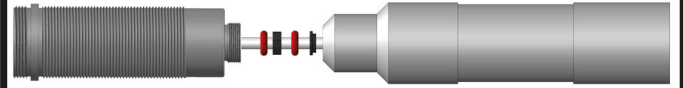
SHOCK ABSORBER - AMORTISSEUR - STOSSDÄMPFER - SCHOKDEMPER



- Do not overtighten the Shock Cap to prevent deformation of the silicone Shock Bladder.
- Ne serrez pas trop le capuchon de l'amortisseur pour éviter la déformation de la membrane en silicone.
- Ziehen Sie die Dämpferabdeckung nicht zu fest an, um eine Verformung der Silikonmembran zu vermeiden.
- Draai de schokkap niet te strak aan om vervorming van het siliconenmembraan te voorkomen.



- Place all small parts on a screwdriver (Ø3mm) and push them into the shock body. All parts will be properly aligned.
- Placez toutes les petites pièces sur un tournevis (Ø3mm) et poussez-les dans le corps de l'amortisseur. Toutes les pièces seront correctement alignées.
- Setzen Sie alle Kleinteile auf einen Schraubendreher (Ø3mm) und drücken Sie sie in den Dämpferkörper. Alle Teile werden richtig ausgerichtet.
- Plaats alle kleine onderdelen op een schroevendraaier (Ø3mm) en duw ze in de behuizing van de schokdemper. Alle onderdelen zullen goed uitgelijnd zijn.



C-00180-1025 (set)



- Appliquez de l'huile silicone
- Siliikonöl auftragen
- Breng siliconenolie aan

OPTION

Aluminium Hard Anodised

C-00180-135-1
Shock Absorber "Ready Build" - 600 Cps Silicone Oil - FRONT

C-00180-137-1
Shock Absorber "Ready Build" - 600 Cps Silicone Oil - REAR

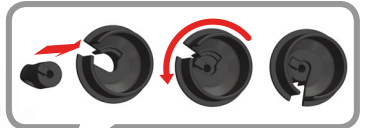
C-00180-1026 (set)

C-00180-1025 (set)
C-00180-1026 (set)

C-00180-1025 (set)

C-00180-627 - Medium (Front - Avant - Vorne - Voor)
C-00180-290 - Medium (Rear - Arrière - Ninten - Achter)

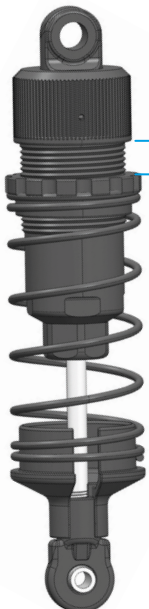
Shock Spring Cup with locking system



C-00180-029

C-00180-770 (Short)

C-00180-149



- Spring tension: Adjust the rebound and ground clearance by turning the shock spring tension ring.
- Tension du ressort : Ajustez le rebond et la hauteur de garde au sol en tournant la bague de tension du ressort d'amortisseur.
- Federspannung: Stellen Sie den Rückprall und die Höhe der Bodenfrieheit ein, indem Sie den Spannungsring der Stoßdämpferfeder drehen.
- Veerspanning: Stel de terugvering en bodenvrijheid in door aan de veerspanningsring van de schokdemper te draaien.



It may be necessary to replace the silicone oil every 50 runs (depends on how you drive and the type of terrain you drive on).
To remove the FR&RE differentials, follow the steps below.



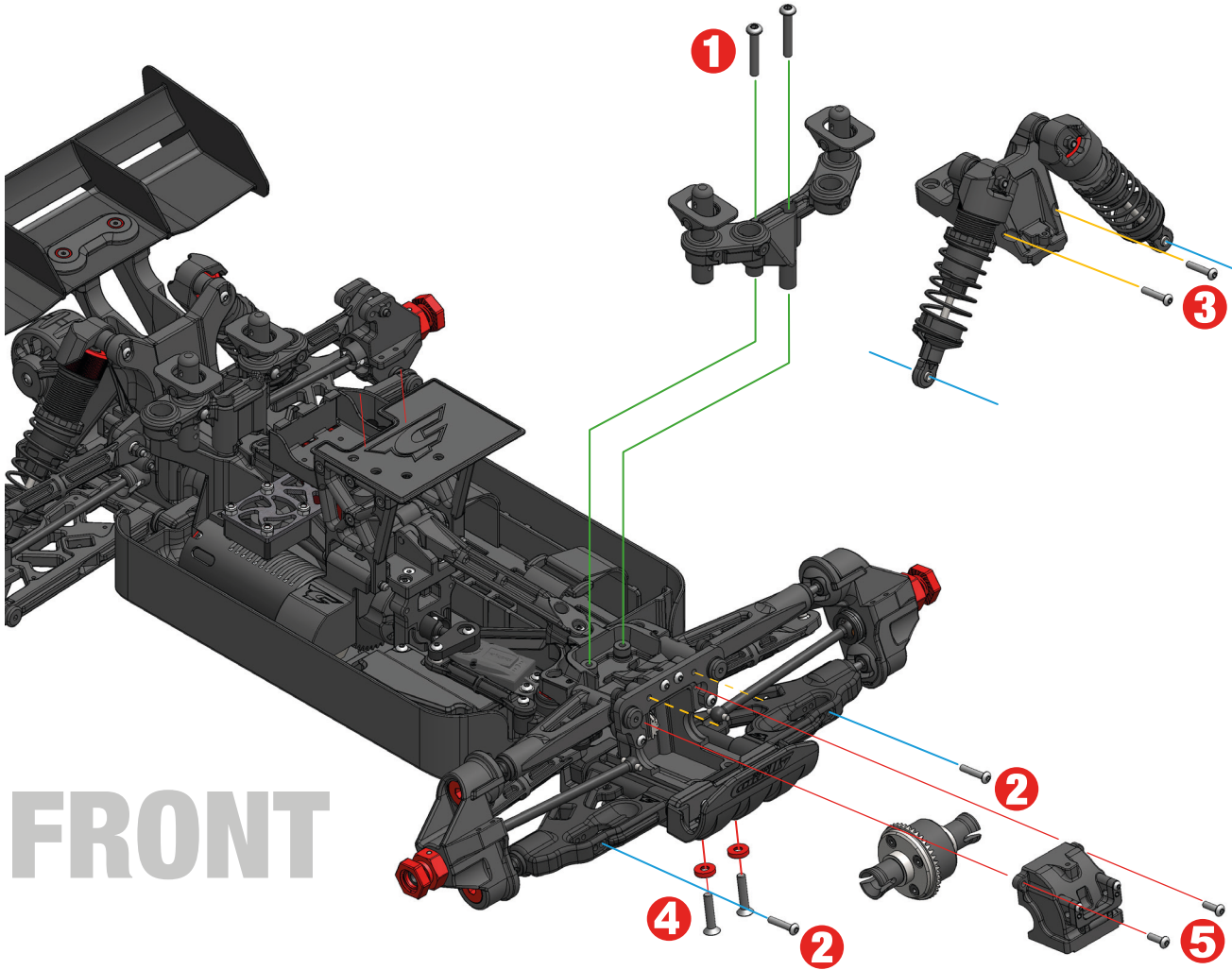
Il peut être nécessaire de remplacer l'huile silicone toutes les 50 courses (cela dépend de votre conduite et du type de terrain sur lequel vous roulez).
Pour extraire les différentiels AV et AR, suivez les étapes indiquées ci-dessous.



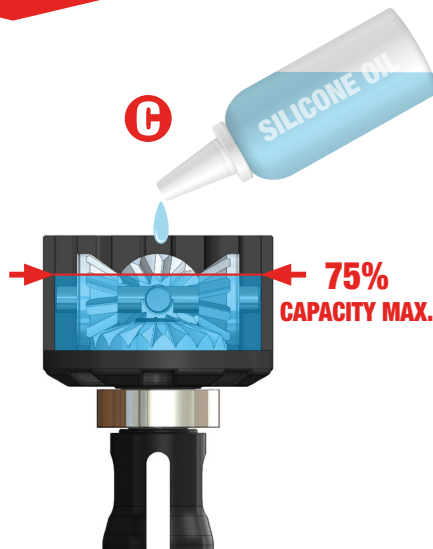
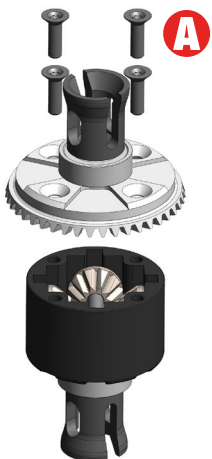
Es kann notwendig sein, das Silikonöl alle 50 Fahrten zu wechseln (abhängig von Ihrer Fahrweise und dem Gelände, auf dem Sie fahren).
Um das Vorder- und Hinterachsdifferential herauszuziehen, befolgen Sie die unten beschriebenen Schritte.



Het kan nodig zijn de siliconenolie om de 50 ritten te vervangen (afhankelijk van uw rijstijl en het soort terrein waarop u rijdt).
Volg de onderstaande stappen om het voor- en achterdifferentieel te verwijderen.



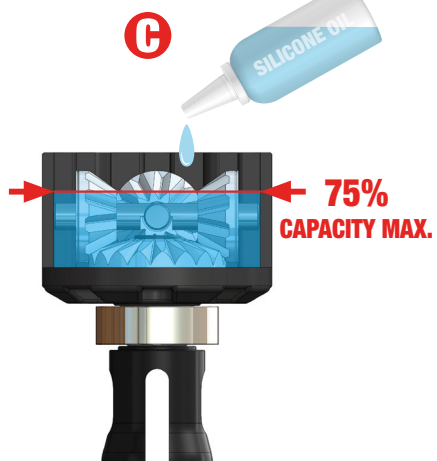
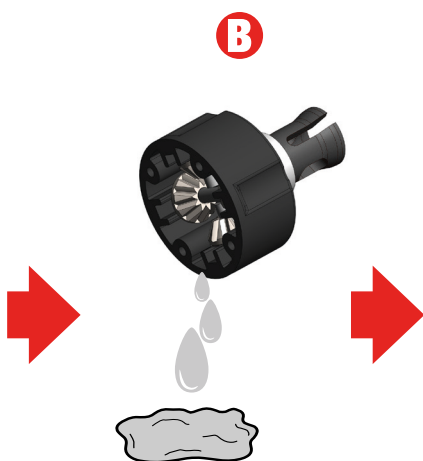
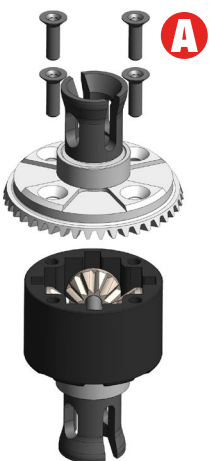
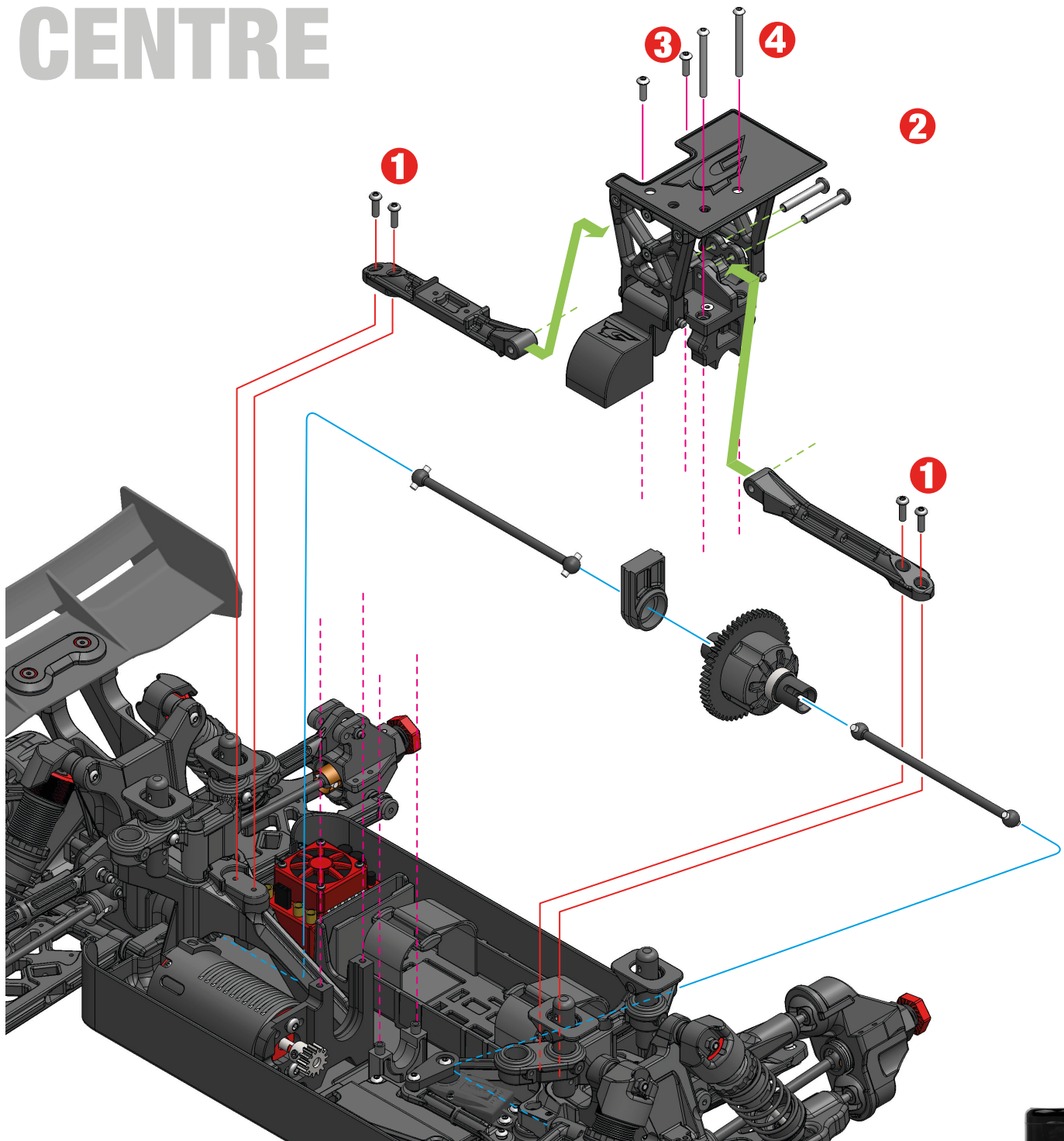
FRONT



#C-81530



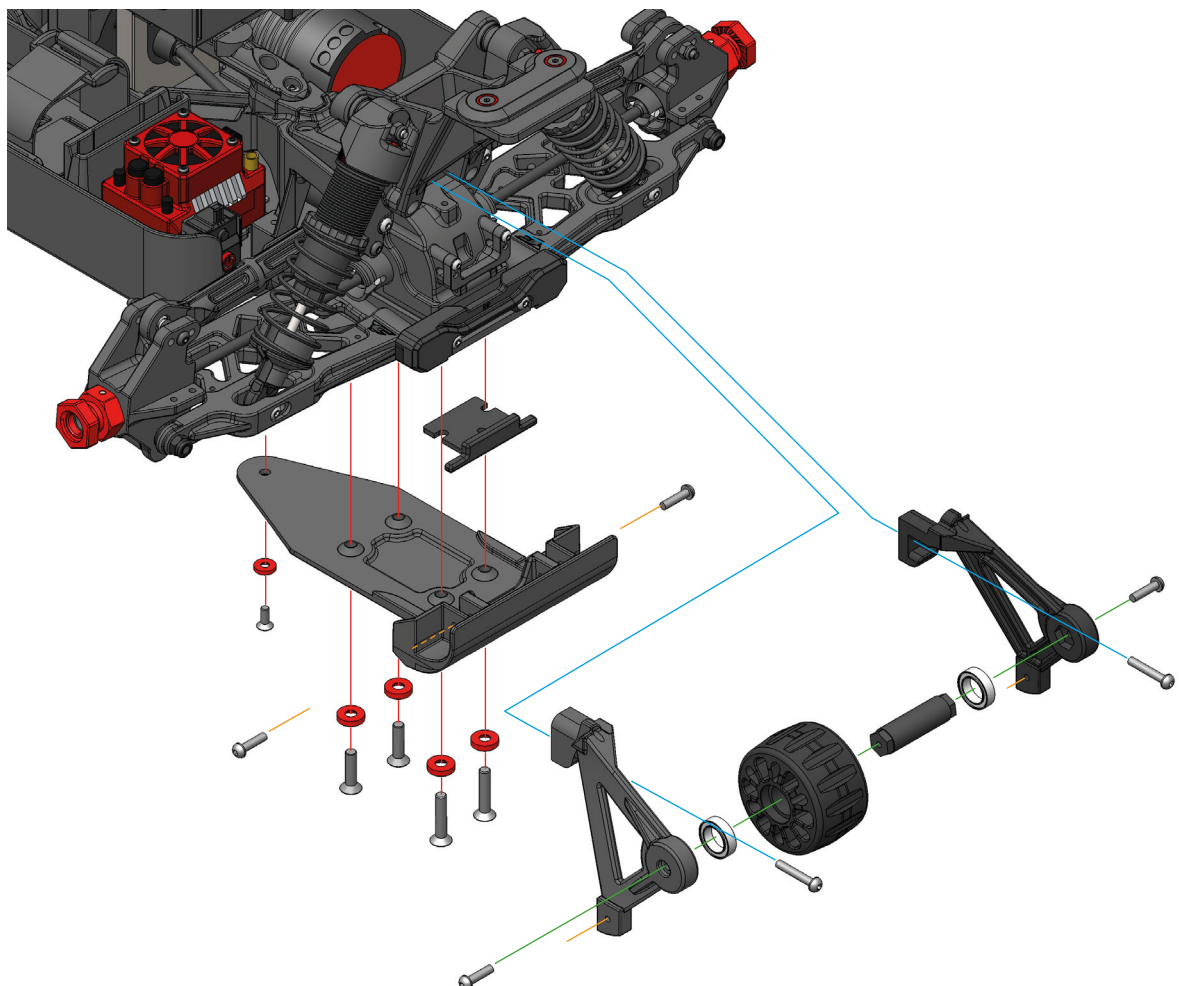
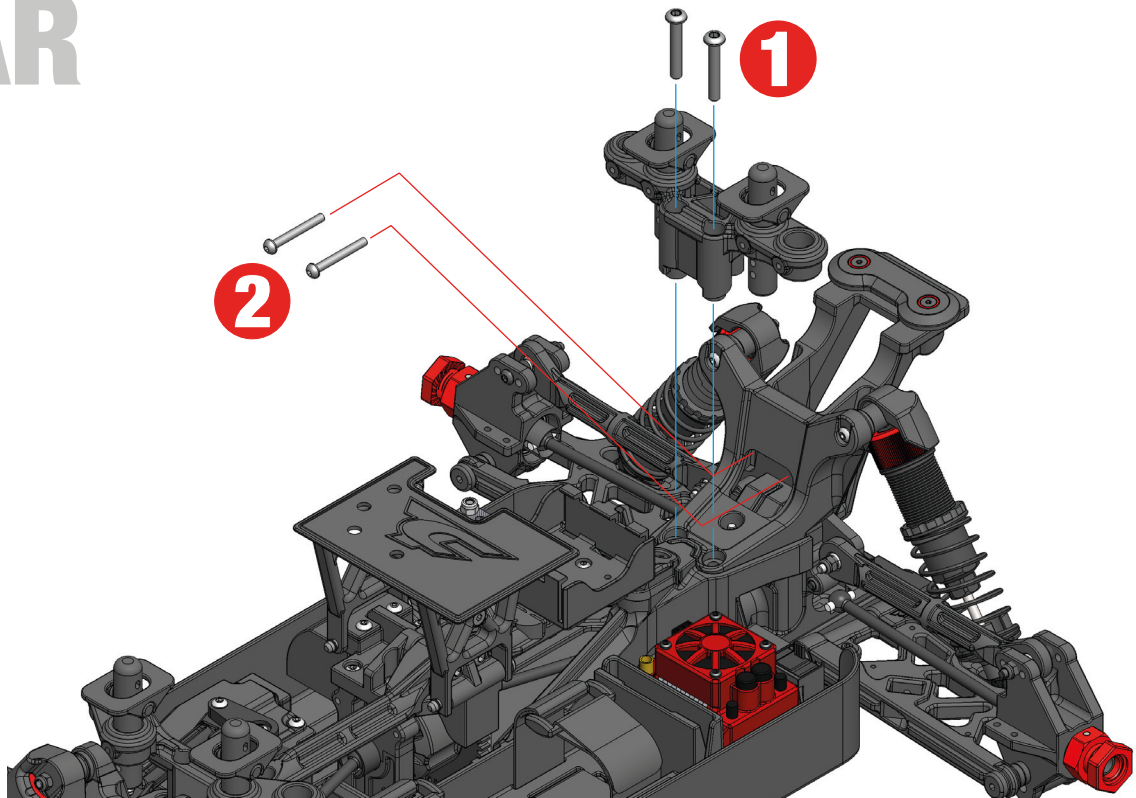
CENTRE



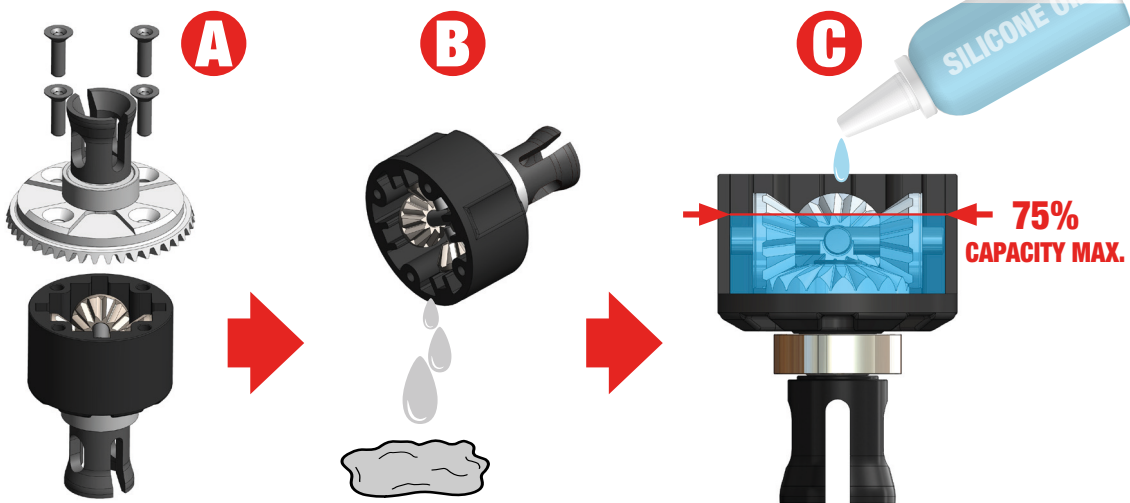
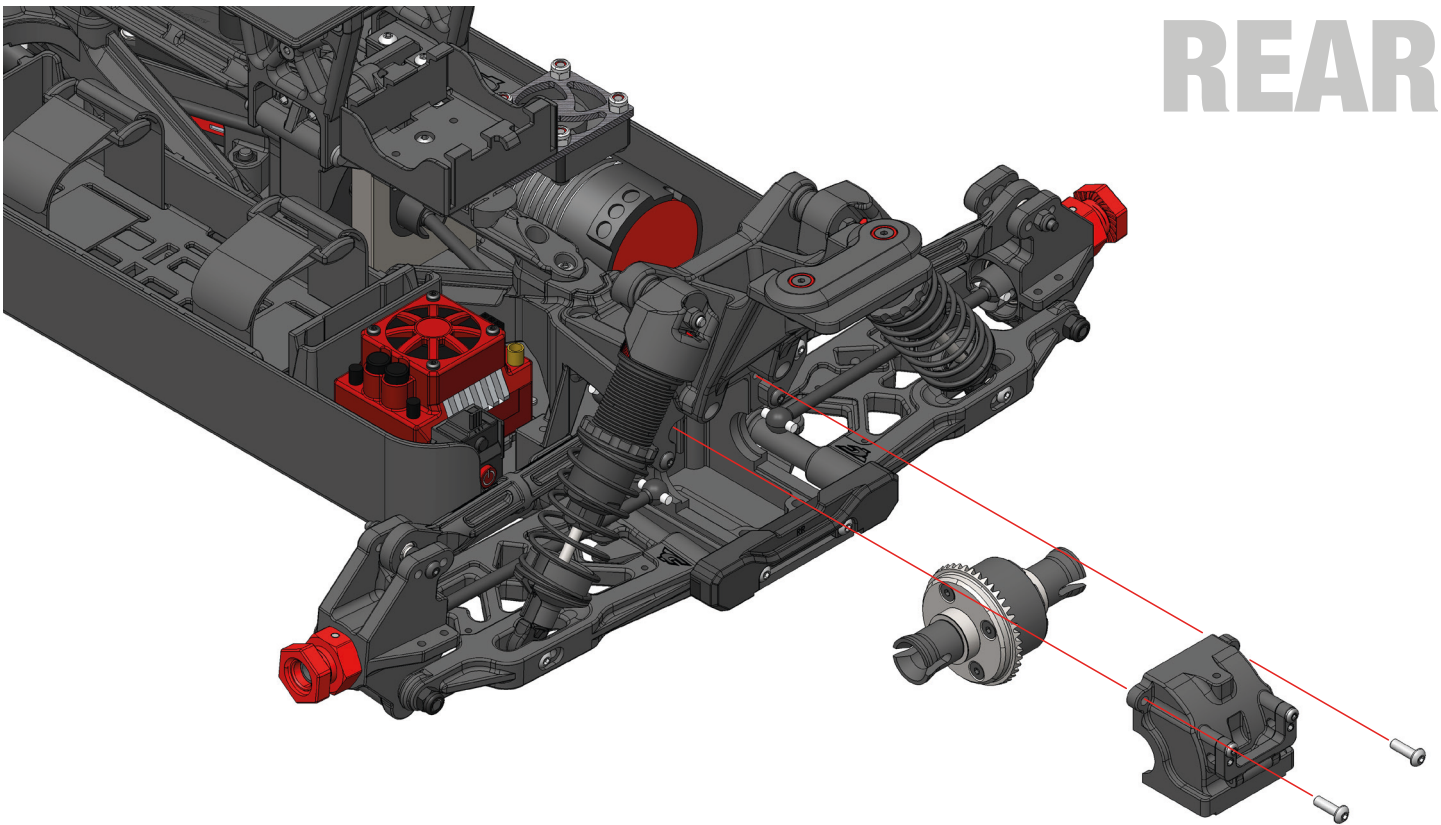
#C-81600



REAR



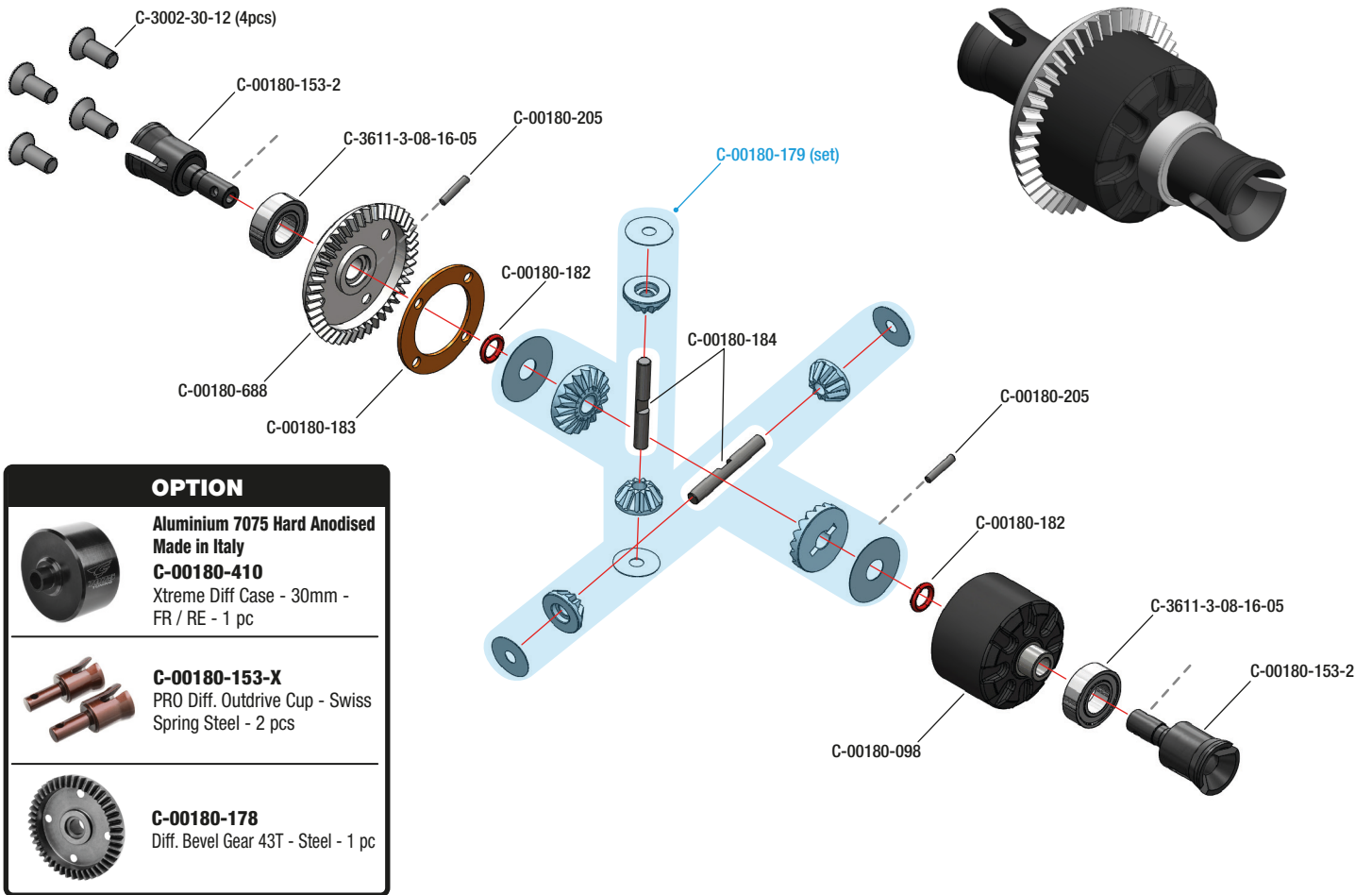
REAR



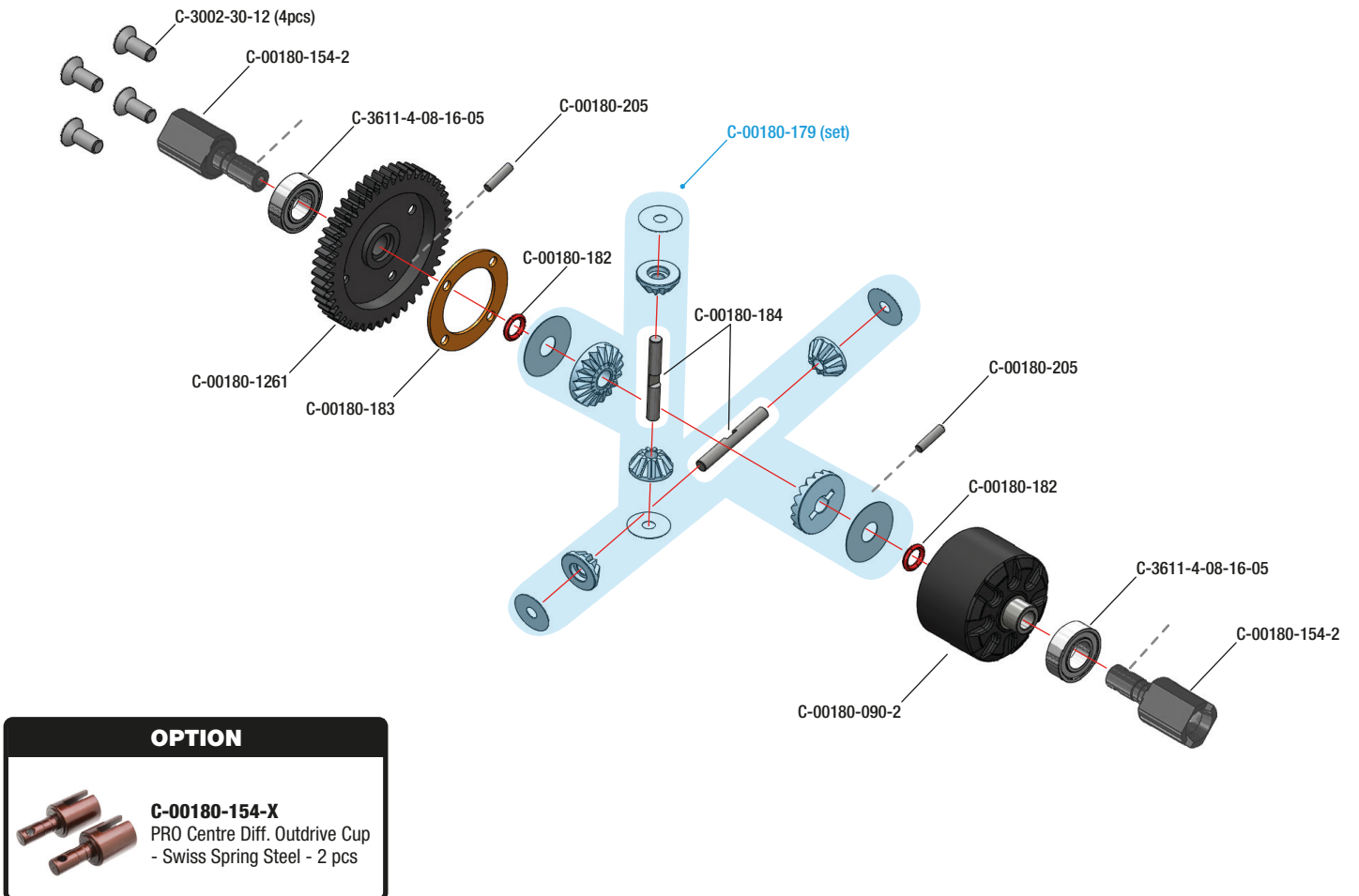
#C-81520

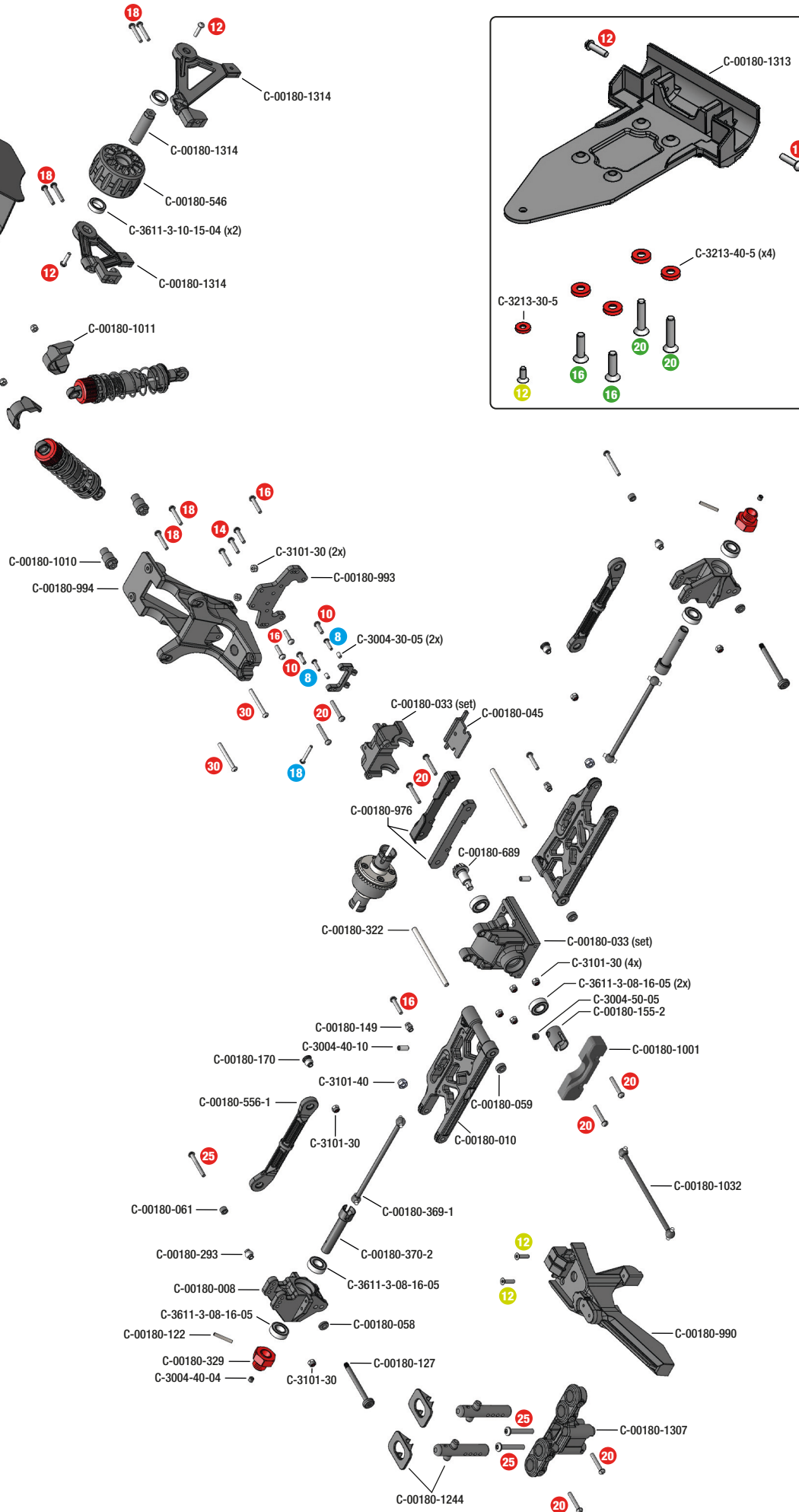
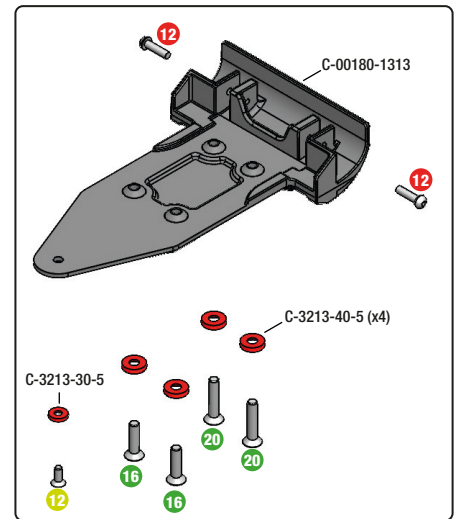


FRONT & REAR DIFFERENTIAL - DIFFÉRENTIELS AV&AR - DIFFERENTIAL VORNE UND HINTEN - VOOR & ACHTER DIFFERENTIEEL



CENTRE DIFFERENTIAL - DIFFÉRENTIEL CENTRAL - ZENTRALDIFFERENTIAL - CentreDIFFERENTIEEL





**HEX FLAT HEAD SCREWS
DIN 7991 - STEEL - 10 PCS**

- 12** M3x12mm
#C-3002-30-12
- 16** M4x16mm
#C-3002-40-16
- 20** M4x20mm
#C-3002-40-20

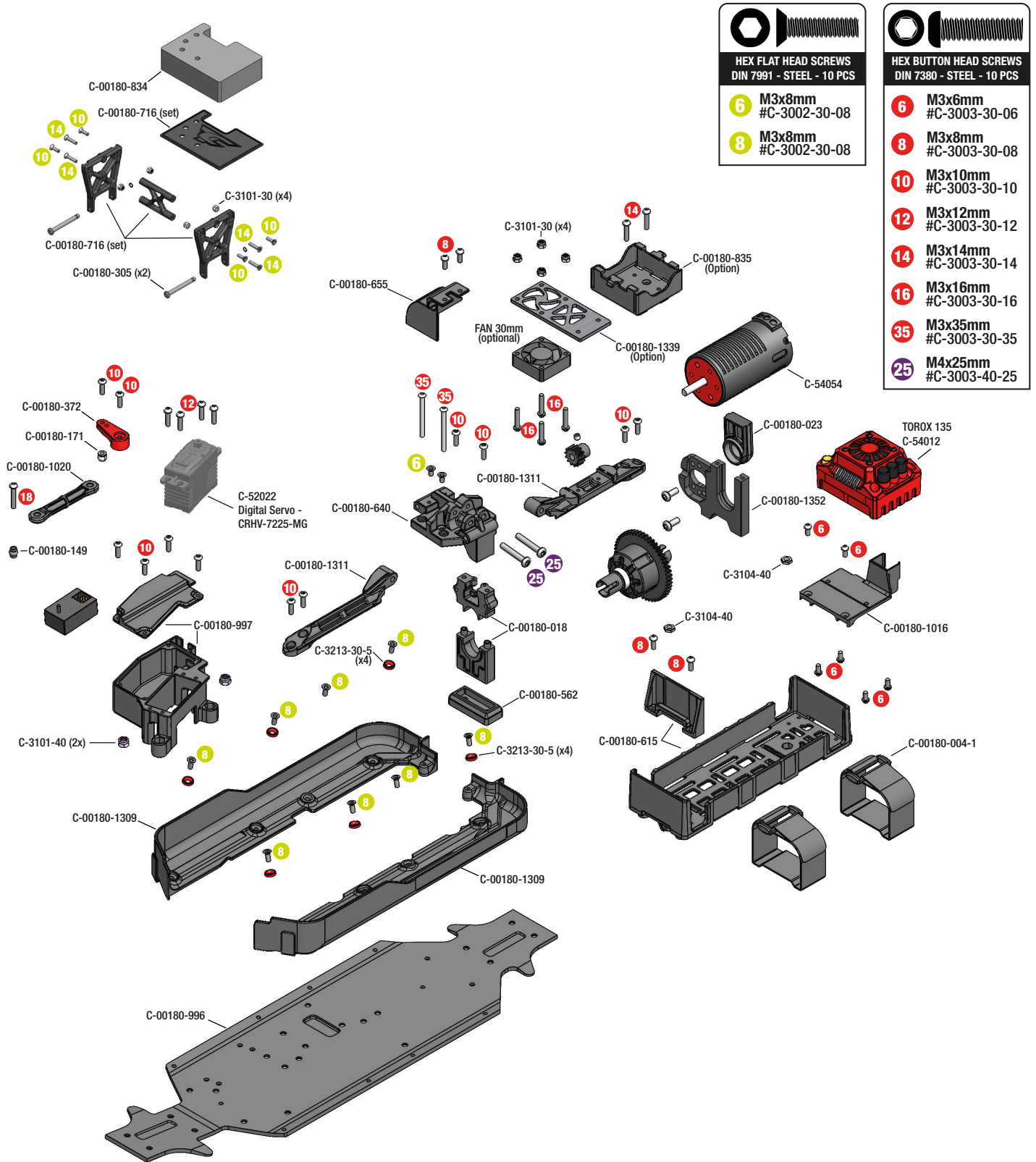
**HEX BUTTON HEAD SCREWS
DIN 7380 - STEEL - 10 PCS**

- 8** M2.5x8mm
#C-3003-25-08
- 18** M2.5x18mm
#C-3003-25-18
- 8** M3x8mm
#C-3003-30-08
- 14** M3x14mm
#C-3003-30-14
- 16** M3x16mm
#C-3003-30-16
- 18** M3x18mm
#C-3003-30-18
- 20** M3x20mm
#C-3003-30-20
- 25** M3x25mm
#C-3003-30-25
- 30** M3x30mm
#C-3003-30-30

OPTION

**Aluminium 7075
Hard Anodised**

C-00180-854
Gearbox Case Set
Fit FRONT or REAR

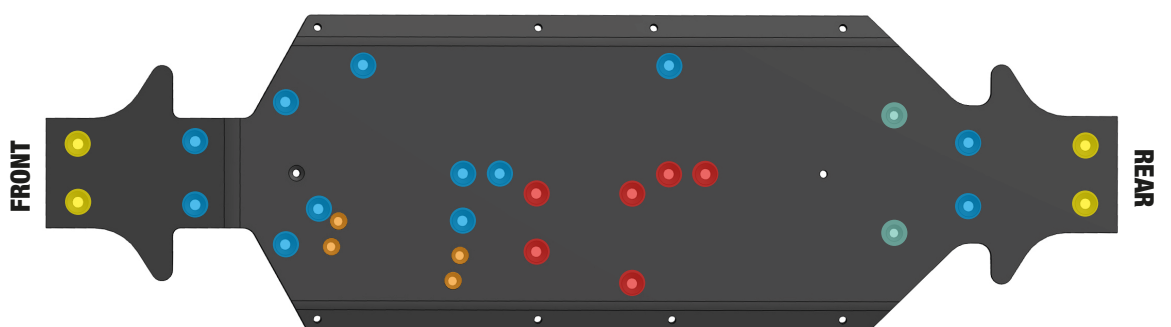


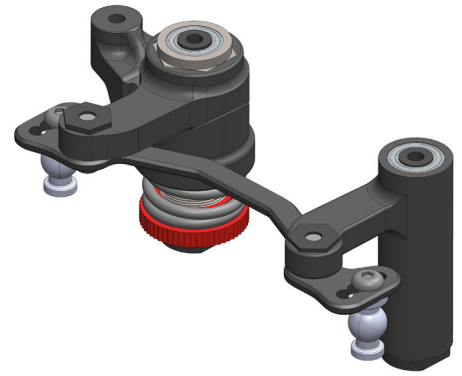
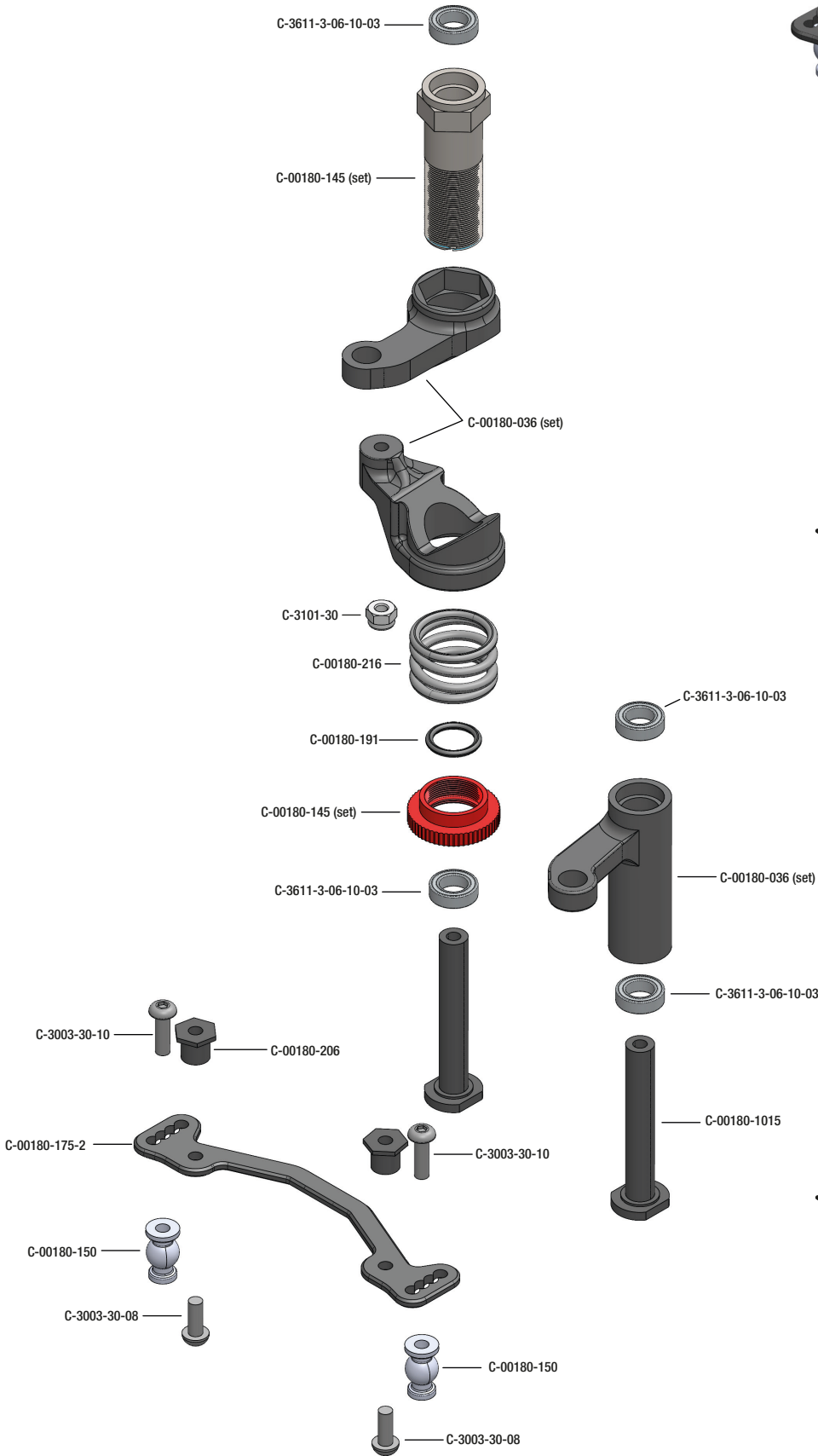
HEX FLAT HEAD SCREWS DIN 7991 - STEEL - 10 PCS	
6	M3x8mm #C-3002-30-08
8	M3x8mm #C-3002-30-08

HEX BUTTON HEAD SCREWS DIN 7380 - STEEL - 10 PCS	
6	M3x6mm #C-3003-30-06
8	M3x8mm #C-3003-30-08
10	M3x10mm #C-3003-30-10
12	M3x12mm #C-3003-30-12
14	M3x14mm #C-3003-30-14
16	M3x16mm #C-3003-30-16
35	M3x35mm #C-3003-30-35
25	M4x25mm #C-3003-40-25

CHASSIS - SCREWS DESCRIPTION - VISSERIE CHÂSSIS - SCHRAUBEN - SCHROEVEN

- M3x12mm DIN7991
#C-3002-30-12
- M3x18mm DIN7991
#C-3002-30-18
- M4x12mm DIN7991
#C-3002-40-12
- M4x14mm DIN7991
#C-3002-40-14
- M4x16mm DIN7991
#C-3002-40-16





OPTION



C-00180-266
 Servo Saver Steering Arm - 7075 T6 -
 Hard Anodised - Black - 1 pc

OPTION



C-00180-831
 Steering Rack - Dual Stiffener - Alumin-
 ium - 1 Pc



C-00180-004-1
Battery Strap - Hook & Loop
- 2 pcs



C-00180-005-2
Wing Mount - Adjustable -
Composite - 1 Set



C-00180-011
Suspension Arm - Upper - Front
- Composite - 1 pc



C-00180-012
Suspension Arm - Lower - Front
- Composite - 1 pc



C-00180-018
Centre Diff Bulkhead - Compos-
ite - 1 Set



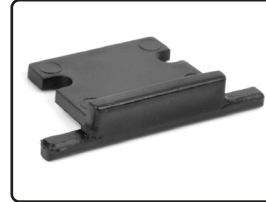
C-00180-023
Motor Mount Centre Diff Insert -
Composite - 1 pc



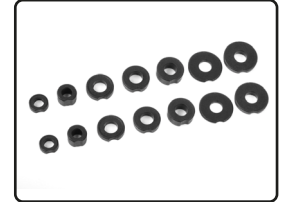
C-00180-033
Bumper - Front - Rear - Com-
posite - 1 set



C-00180-036
Steering Bellcrank - Parts A-B-C
- Composite - 1 Set



C-00180-045
Bumper Spacer - Front - Rear
- 1pc



C-00180-055
Suspension Arm Shim - Com-
posite - 1 Set



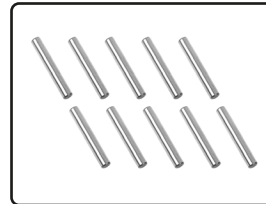
C-00180-109
Caster Clips Set - 1 to 4.5mm
- 1 Set



C-00180-114
Composite Rear Upright - Wide
- 1 pc



C-00180-117
Pivot Ball Adjusting Nut - Alu-
minium - 4 pcs



C-00180-122
Pin 2.5x17mm - Steel - 10 pcs



C-00180-123
Pivot Ball - Steel - 4 pcs



C-00180-127
Hinge Pin - Outer - Steel - 2 pcs



C-00180-145
Servo Saver Shaft w/ Nut -
Aluminium - 1 pc



C-00180-150
Ball Shouldered - 6.8mm - Steel
- 4 pcs



C-00180-155-2
Pinion Outdrive Cup - Steel -
2 pcs



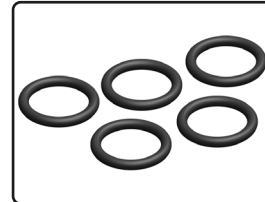
C-00180-170
Ball - 6.8mm - Steel - 2 pcs



C-00180-171
Threaded Ball - 6mm - Steel -
2 pcs



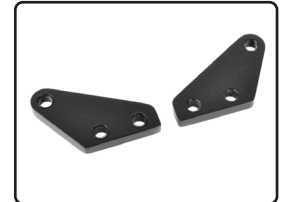
C-00180-175-2
Steering Rack - Aluminium - 1 pc



C-00180-191
O-Ring - Silicone - 9x12mm
- 5 pcs



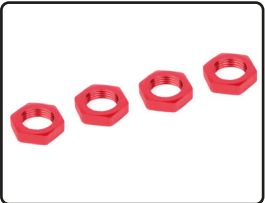
C-00180-206
Steering Rack Bushing - Steel
- 2 pcs



C-00180-207
Steering Block Arms - Alumi-
num - 2 pcs



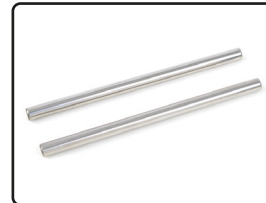
C-00180-216
Servo Saver Spring - 1 pc



C-00180-230
Wheel Nut - Aluminium -
Ribbed - 4 pcs



C-00180-293
Ball 6.8mm - Steel - 4 pcs



C-00180-322
Suspension Arm Pivot Pin - Low-
er Inner - Fr/Re - Steel - 2 pcs



C-00180-329
Wheel Hex Adapter - Wide RTR
- Aluminium - 2 pcs



C-00180-360
Universal Joint Drive Shaft -
Buggy - Front - 1 pc



C-00180-369-1
Dogbones - Short - Rear - Steel
- 2 pcs



C-00180-305
Centre Roll Cage Pin - Steel
- 2 pcs



C-00180-322
Suspension Arm Pivot Pin - Low-
er Inner - Fr/Re - Steel - 2 pcs



C-00180-370-2
Wheel Drive Axle - Buggy - Rear
- 2 pcs



C-00180-372
Servo Arm - Steering - Alu -
1 pc



C-00180-546
Wheelie Bar Wheel - Compos-
ite - 1 pc



C-00180-551
Front Bumper - Composite. -
1 pc



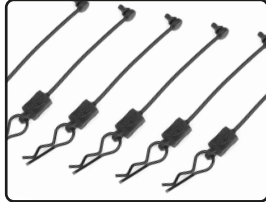
C-00180-555-1
Steering Links - Buggy - 77mm
- Composite



C-00180-556-1
Camber Links Rear - 93mm -
Composite - 2 pcs



C-00180-562
Centre Diff Support Spacer -
4mm - Composite - 1 pc



C-00180-614
Body Clip Retainer w/ Body clip
- Black - 6 pcs



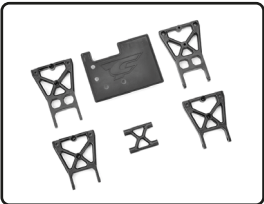
C-00180-615
Battery Tray - Large - Compos-
ite - 1 set



C-00180-640
Centre Diff Plate - for Chassis
Tube - Composite - 1 pc



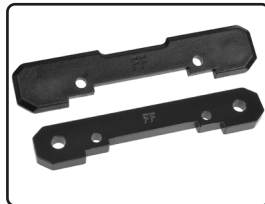
C-00180-655
Spur Gear Cover - Composite
- 1 pc



C-00180-716
Centre Roll Cage Mount - Com-
posite - 1 Set



C-00180-775
HD Steering Block Wide - Pivot
Ball Cup (2) - Composite - 1 set



C-00180-974
Suspension Arm Mount - FR - Alu.
4mm - Composite Cover - 1 Set



C-00180-976
Suspension Arm Mount - RR - Alu.
4mm - Composite Cover - 1 Set



C-00180-989
Chassis Brace - EB - Front -
Composite - 1 pc



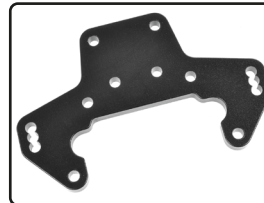
C-00180-990
Chassis Brace - EB - Rear -
Composite - 1 pc



C-00180-991
Hinge Pin Plate - EB - Front -
Aluminium 4mm - 1 pc



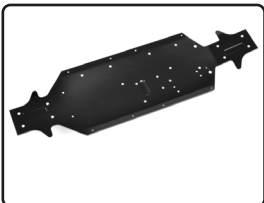
C-00180-992
Shock Tower - EB - Front -
Composite - 1 pc



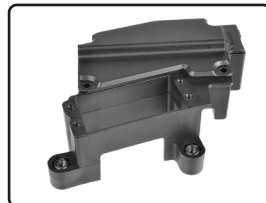
C-00180-993
Shock Tower - Wing Mount -
EB - Rear - Composite - 1 pc



C-00180-994
Shock Tower - Wing Mount -
EB - Rear - Composite - 1 pc



C-00180-996
Chassis - EB - Aluminium 3mm
- Black - 1 pc



C-00180-997
Servo Mount - Receiver Box -
M23 - Composite - 1 Set



C-00180-1001
Suspension Arm Mount - RF -
FR - Composite - 1 Set



C-00180-1003
Wing Washer - EB - Composite
- 1 Pc



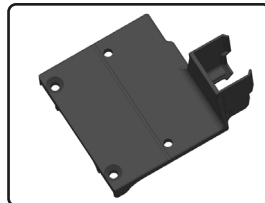
C-00180-1004
Esc switch mount plate - Com-
posite - 1 pc



C-00180-1010
Shock Spacer - 4 pcs



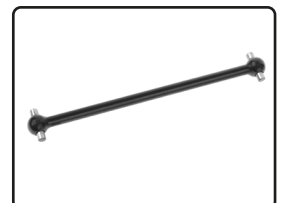
C-00180-1015
Servo Saver Post - EB - Steel
- 2 pcs



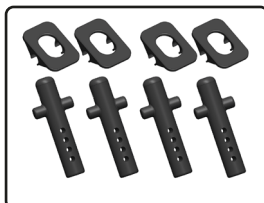
C-00180-1016
ESC Plate - Composite - 1 pc



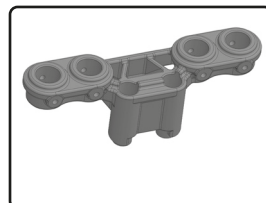
C-00180-1020
Servo Steering Link - Compos-
ite - 1 pc



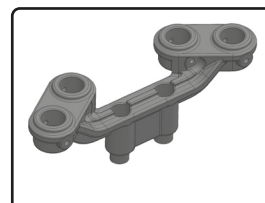
C-00180-1032
Drive Shaft - Centre - 97mm -
Steel - 1 pc



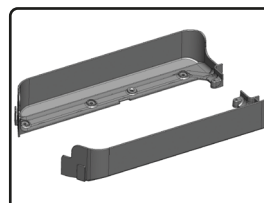
C-00180-1244
Body Post - Composite - 1 Set



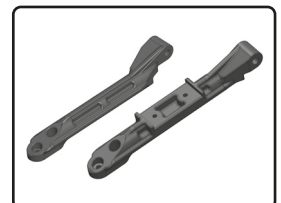
C-00180-1307
Body Post Support - Compos-
ite - 1 pc



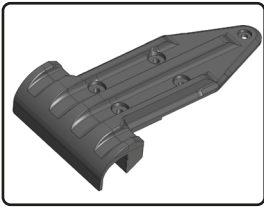
C-00180-1308
Body Post Support - Compos-
ite - 1 pc



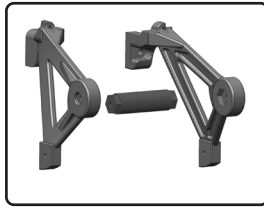
C-00180-1309
Side Guards - Left-Right - Com-
posite - 1 Set



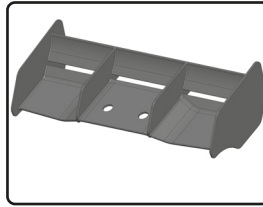
C-00180-1311
Chassis Braces Front & Rear
- 2 pcs



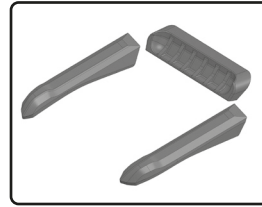
C-00180-1313
Rear Bumper - Composite. -
1 pc



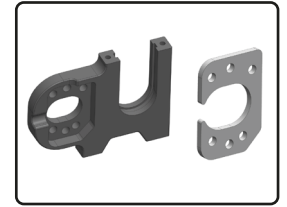
C-00180-1314
Wheelie Bar Support - Compos-
ite - 1 Set



C-00180-1316
Wing - Composite - 1 pc



C-00180-1330
Roof Skids - PUNISHER 4 -
Composite - 1 Set



C-00180-1352
Motor Mount w/ Insert -
Aluminum - 1 Set



C-00180-632
MT Tires - XL4S - Grabber -
Glued on Black Rims - 1 pair



C-00180-1329-5
PUNISHER 4 - Body painted and
cut - RED - 1 pc



C-00180-1329-6
PUNISHER 4 - Body painted and
cut - BLUE - 1 pc



C-00180-1329-7
PUNISHER 4 - Body painted and
cut - GREEN - 1 pc



C-72713
M1.0 Pinion - Hardened Steel -
Shaft Diameter 5mm

FRONT & REAR DIFFERENTIAL - SPARE PARTS



C-00180-689
Bevel Pinion 13T - Steel - 1 pc



C-00180-688
Diff. Bevel Gear 43T - Molded Steel - 1 pc



C-00180-179
Planetary Diff. Gears - Steel - 1 Set



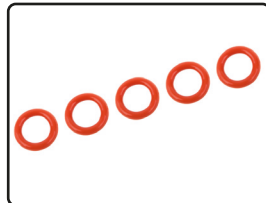
C-00180-184
Gear Diff. Pin - Steel - 2 pcs



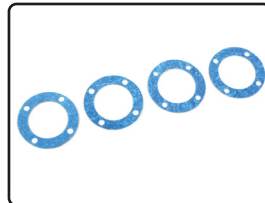
C-00180-205
Diff. Outdrive Pin - 2x11,8mm - Steel - 4 pcs



C-00180-098
Diff Case - FR-RE - Composite - 1 pc



C-00180-182
O-Ring - Silicone - 5x8mm - 5 pcs

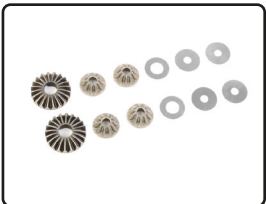


C-00180-183
Diff. Gasket - 4 pcs



C-00180-153-2
Diff. Outdrive Cup - Steel - 2 pcs

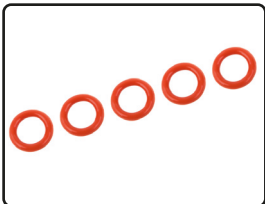
CENTRE DIFFERENTIAL - SPARE PARTS



C-00180-179
Planetary Diff. Gears - Steel - 1 Set



C-00180-184
Gear Diff. Pin - Steel - 2 pcs



C-00180-182
O-Ring - Silicone - 5x8mm - 5 pcs



C-00180-183-1
Centre Diff. Gasket - 4 pcs



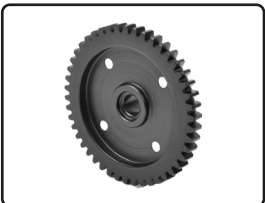
C-00180-205
Diff. Outdrive Pin - 2x11,8mm - Steel - 4 pcs



C-00180-154-2
Centre Diff. Outdrive Cup - Steel - 2 pcs



C-00180-090-2
Diff Case - Centre - Composite - 1 pc



C-00180-1261
Spur Gear 46T - Molded Steel - 1 pc

SHOCK ABSORBER - SPARE PARTS



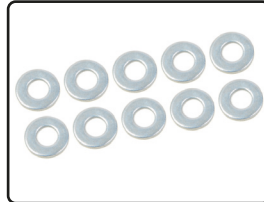
C-00180-1011
Shock Cap Protector - EB - Composite - 2 pcs



C-00180-1025
Maintenance Kit 1 - Composite Shocks - 1 Set



C-00180-1026
Maintenance Kit 2 - Composite Shocks - 1 Set



C-00180-190
Shock Washer - 2.5x6x0.5mm - Steel - 10 pcs



C-00180-029
Shock Spring Cup - Composite - 4 pcs



C-00180-164
Shock Shaft - 66mm - Rear - Steel - 2 pcs



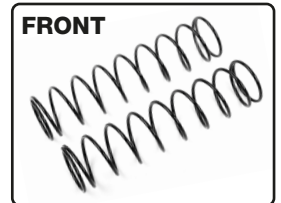
C-00180-165
Shock Shaft - 55mm - Front - Steel - 2 pcs



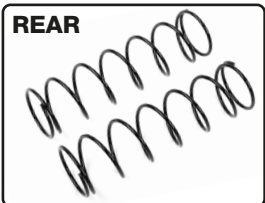
C-00180-770
HD Shock End - Short - Composite - 4 pcs



C-00180-1008
Shock Cap - Ring Set - 2 pcs



C-00180-627
Shock Spring - Medium - Front - 2 pcs



C-00180-290
Shock Spring - Medium - 1.6mm - 84-86mm - 2 pcs



C-00180-1023
Shock Absorber body - Front - Composite - 2 pcs



C-00180-1030
Shock Absorber body - Rear - Composite - 2 pcs

ELECTRONICS - COMPOSANTS ÉLECTRONIQUES • ELEKTRONIKTEILE • ELEKTRONICA-ONDERDELEN



C-54012
Speed Controller - TOROX 135 - Brushless - 2-4S



C-52022
Digital Servo - High Voltage - Metal Gear - 25 Kg Torque



C-54054
Kuron 725 - Brushless Motor - Sensorless



Check the availability of spare parts on the website www.corally.com

Visualisez la disponibilité des pièces de rechange sur le site web www.corally.com

Sehen Sie sich die Verfügbarkeit von Ersatzteilen auf der Website www.corally.com an.

Controleer de beschikbaarheid van reserveonderdelen op de website www.corally.com



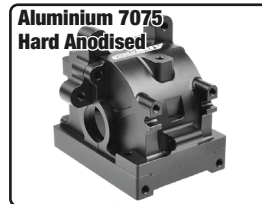
C-00180-157
Wing Washer - Lightened -
Aluminium - 2 pcs



C-00180-316
Shock Cap - Lower - Aluminium
- 2 pcs



**Aluminium 7075
Hard Anodised**
C-00180-410
Xtreme Diff Case - 30mm -
FR / RE - Made in Italy - 1 pc



**Aluminium 7075
Hard Anodised**
C-00180-854
Gearbox Case Set - Swiss Made
7075 T6 - Black - Set



C-00180-266
Servo Saver Steering Arm - Alu.
7075 T6 - Hard Anodised - 1 pc



C-00180-153-X
PRO Diff. Outdrive Cup - Swiss
Spring Steel - 2 pcs



C-00180-155-X
PRO Pinion Outdrive Cup -
Swiss Spring Steel - 2 pcs



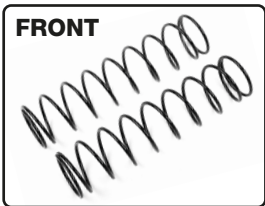
C-00180-154-X
PRO Centre Diff. Outdrive Cup -
Swiss Spring Steel - 2 pcs



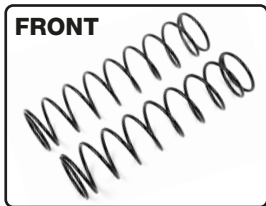
C-00180-365
Universal Joint Drive Shaft -
Buggy - Rear - 1 pc



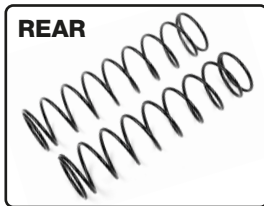
C-00180-1019
Chassis Brace - EB - Alumi-
um - 1 pc



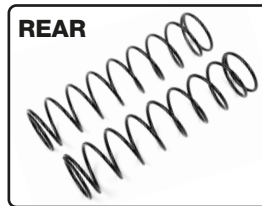
FRONT
C-00180-626
Shock Spring - Soft - 1.4mm -
75-77mm - 2 pcs



FRONT
C-00180-628
Shock Spring - Hard - 1.8mm -
75-77mm - 2 pcs



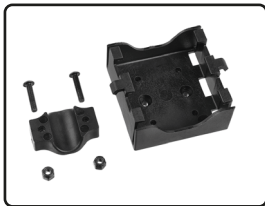
REAR
C-00180-289
Shock Spring - Soft - 1.4mm -
84-86mm - 2 pcs



REAR
C-00180-291
Shock Spring - Hard - 1.8mm -
84-86mm - 2 pcs



C-00180-831
Steering Rack - Dual Stiffener -
Aluminium - 1 Pc



C-00180-835
Performance Data Logger
Holder - Composite - 1 pc



**Aluminium 7075
Hard Anodised**
C-00180-410
Xtreme Diff Case - 30mm -
FR / RE - Made in Italy - 1 pc



C-00180-685
Centre Diff Assembly - Alum. /
Steel - 46T Main Gear



C-00180-178
Diff. Bevel Gear 43T - CNC Cut -
Steel - 1 Pc



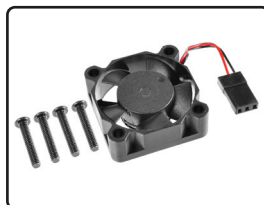
C-00180-156
Bevel Pinion 13T - CNC Cut
Steel - 1 Pc



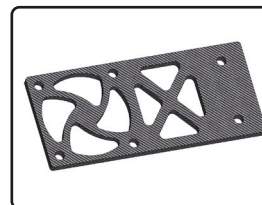
C-52005
Digital Servo - CS-5245 - High
Voltage - Coreless Motor -
Steel Gear - 45 Kg Torque



**IP-67
25 Kg Torque
5>8.4V**
C-52015
OC-27 HV Digital Servo - Core
DC Motor - Steel Gear - Ball
Beared - Full Alloy Case



C-54011-FAN
Cooling Fan 30mm - 5-6V - JR-
3P Male Plug - 10000rpm



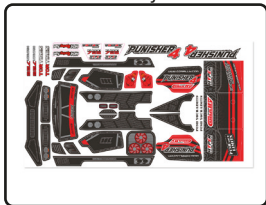
C-00180-1339
Fan Support - Graphite. -
1 pc



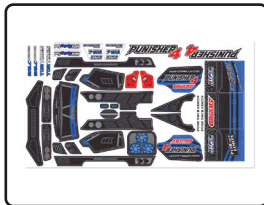
M1.0 Pinion - Hardened Steel -
Shaft Diameter 5mm
C-72715 • 15 Teeth
C-72717 • 17 Teeth



C-00180-1329
PUNISHER 4 - Body Clear and
cut - 1 pc



C-00180-1329-1
PUNISHER 4 - Body Decal Sheet
- RED - 1 pc

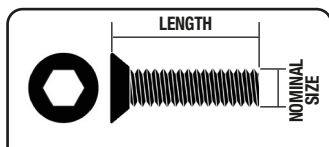


C-00180-1329-2
PUNISHER 4 - Body Decal Sheet
- BLUE - 1 pc



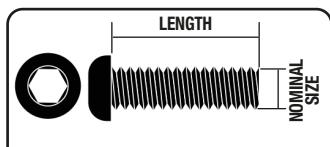
C-00180-1329-3
PUNISHER 4 - Body Decal Sheet
- GREEN - 1 pc

STEEL SCREWS - VISSERIE ACIER • STAHSCHRAUBEN • STAAL SCHROEVEN



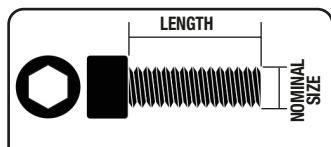
**HEX FLAT HEAD SCREWS
DIN 7991 - STEEL - 10 PCS**

REF	NOMINAL SIZE	LENGTH MM
C-3002-25-06	M2.5	6
C-3002-25-08	M2.5	8
C-3002-25-10	M2.5	10
C-3002-25-12	M2.5	12
C-3002-25-16	M2.5	16
C-3002-25-18	M2.5	18
C-3002-25-20	M2.5	20
C-3002-30-06	M3	6
C-3002-30-08	M3	8
C-3002-30-10	M3	10
C-3002-30-12	M3	12
C-3002-30-14	M3	14
C-3002-30-16	M3	16
C-3002-30-18	M3	18
C-3002-30-20	M3	20
C-3002-30-25	M3	25
C-3002-30-35	M3	35
C-3002-40-08	M4	8
C-3002-40-10	M4	10
C-3002-40-12	M4	12
C-3002-40-14	M4	14
C-3002-40-16	M4	16
C-3002-40-18	M4	18
C-3002-40-20	M4	20
C-3002-40-25	M4	25
C-3002-40-30	M4	30



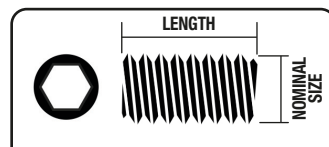
**HEX BUTTON HEAD SCREWS
DIN 7380 - STEEL - 10 PCS**

REF	NOMINAL SIZE	LENGTH MM
C-3003-25-06	M2.5	6
C-3003-25-08	M2.5	8
C-3003-25-10	M2.5	10
C-3003-25-12	M2.5	12
C-3003-25-16	M2.5	16
C-3003-25-18	M2.5	18
C-3003-25-20	M2.5	20
C-3003-30-06	M3	6
C-3003-30-08	M3	8
C-3003-30-10	M3	10
C-3003-30-12	M3	12
C-3003-30-14	M3	14
C-3003-30-16	M3	16
C-3003-30-18	M3	18
C-3003-30-20	M3	20
C-3003-30-25	M3	25
C-3003-30-35	M3	35
C-3003-40-08	M4	8
C-3003-40-10	M4	10
C-3003-40-12	M4	12
C-3003-40-14	M4	14
C-3003-40-16	M4	16
C-3003-40-18	M4	18
C-3003-40-20	M4	20
C-3003-40-25	M4	25
C-3003-40-30	M4	30



**HEX SOCKET HEAD SCREWS
DIN 912 - STEEL - 10 PCS**

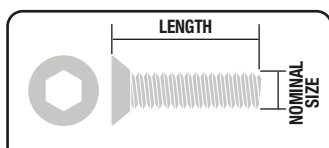
REF	NOMINAL SIZE	LENGTH MM
C-3000-25-06	M2.5	6
C-3000-25-08	M2.5	8
C-3000-25-10	M2.5	10
C-3000-25-12	M2.5	12
C-3000-25-16	M2.5	16
C-3000-25-18	M2.5	18
C-3000-25-20	M2.5	20
C-3000-30-06	M3	6
C-3000-30-08	M3	8
C-3000-30-10	M3	10
C-3000-30-12	M3	12
C-3000-30-14	M3	14
C-3000-30-16	M3	16
C-3000-30-18	M3	18
C-3000-30-20	M3	20
C-3000-30-25	M3	25
C-3000-30-35	M3	35
C-3000-40-08	M4	8
C-3000-40-10	M4	10
C-3000-40-12	M4	12
C-3000-40-14	M4	14
C-3000-40-16	M4	16
C-3000-40-18	M4	18
C-3000-40-20	M4	20
C-3000-40-25	M4	25
C-3000-40-30	M4	30



**HEX SET SCREWS
DIN 916 - STEEL - 10 PCS**

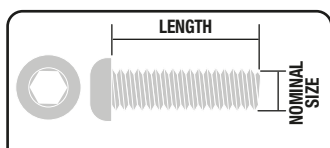
REF	NOMINAL SIZE	LENGTH MM
C-3004-30-03	M3	3
C-3004-30-05	M3	5
C-3004-30-08	M3	8
C-3004-30-10	M3	10
C-3004-30-12	M3	12
C-3004-30-20	M3	20
C-3004-40-04	M4	4
C-3004-40-06	M4	6
C-3004-40-08	M4	8
C-3004-40-10	M4	10
C-3004-40-12	M4	12
C-3004-50-04	M5	4
C-3004-50-05	M5	5

TITANIUM SCREWS - VISSERIE TITANE • TITANIUMSCHRAUBEN • TITANIUM SCHROEVEN



**HEX FLAT HEAD SCREWS
TITANIUM - 10 PCS**

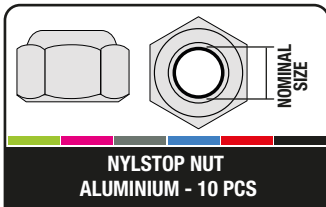
REF	NOMINAL SIZE	LENGTH MM
C-3022-30-06	M3	6
C-3022-30-08	M3	8
C-3022-30-10	M3	10
C-3022-30-12	M3	12
C-3022-30-14	M3	14
C-3022-30-16	M3	16
C-3022-30-18	M3	18
C-3022-30-20	M3	20
C-3022-40-08	M4	8
C-3022-40-10	M4	10
C-3022-40-12	M4	12
C-3022-40-16	M4	16
C-3002-40-20	M4	20



**HEX BUTTON HEAD SCREWS
TITANIUM - 10 PCS**

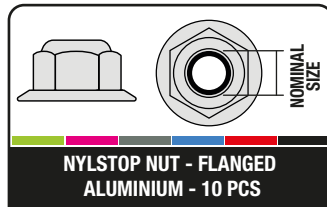
REF	NOMINAL SIZE	LENGTH MM
C-3023-30-06	M3	6
C-3023-30-08	M3	8
C-3023-30-10	M3	10
C-3023-30-12	M3	12
C-3023-30-16	M3	16
C-3023-30-20	M3	20
C-3023-30-25	M3	25
C-3023-40-06	M4	6
C-3023-40-08	M4	8
C-3023-40-10	M4	10
C-3023-40-12	M4	12
C-3023-40-16	M4	16
C-3023-40-20	M4	20
C-3023-40-25	M4	25

NUTS - ECROUS • MUTTERN • MOEREN



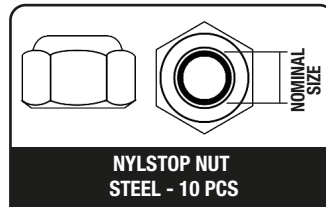
NYLSTOP NUT
ALUMINIUM - 10 PCS

REF	NOMINAL SIZE	COLOR
C-3106-20-0	M2	Gold
C-3106-20-1	M2	Green
C-3106-20-2	M2	Purple
C-3106-20-3	M2	Gun
C-3106-20-4	M2	Blue
C-3106-20-5	M2	Red
C-3106-20-6	M2	Black
C-3106-30-0	M3	Gold
C-3106-30-1	M3	Green
C-3106-30-2	M3	Purple
C-3106-30-3	M3	Gun
C-3106-30-4	M3	Blue
C-3106-30-5	M3	Red
C-3106-30-6	M3	Black
C-3106-40-0	M4	Gold
C-3106-40-1	M4	Green
C-3106-40-2	M4	Purple
C-3106-40-3	M4	Gun
C-3106-40-4	M4	Blue
C-3106-40-5	M4	Red
C-3106-40-6	M4	Black
C-3106-50-0	M5	Gold
C-3106-50-1	M5	Green
C-3106-50-2	M5	Purple
C-3106-50-3	M5	Gun
C-3106-50-4	M5	Blue
C-3106-50-5	M5	Red
C-3106-50-6	M5	Black



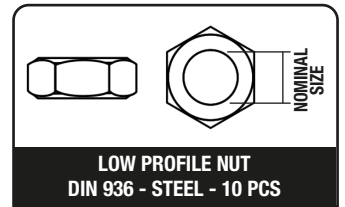
NYLSTOP NUT - FLANGED
ALUMINIUM - 10 PCS

REF	NOMINAL SIZE	COLOR
C-3107-30-0	M3	Gold
C-3107-30-1	M3	Green
C-3107-30-2	M3	Purple
C-3107-30-3	M3	Gun
C-3107-30-4	M3	Blue
C-3107-30-5	M3	Red
C-3107-30-6	M3	Black
C-3107-40-0	M4	Gold
C-3107-40-1	M4	Green
C-3107-40-2	M4	Purple
C-3107-40-3	M4	Gun
C-3107-40-4	M4	Blue
C-3107-40-5	M4	Red
C-3107-40-6	M4	Black
C-3107-50-0	M5	Gold
C-3107-50-1	M5	Green
C-3107-50-2	M5	Purple
C-3107-50-3	M5	Gun
C-3107-50-4	M5	Blue
C-3107-50-5	M5	Red
C-3107-50-6	M5	Black



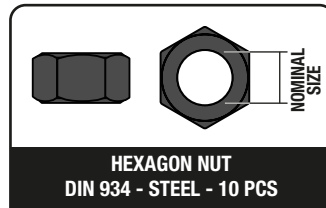
NYLSTOP NUT
STEEL - 10 PCS

REF	NOMINAL SIZE	COLOR
C-3101-20-6	M2	Black
C-3101-25	M2.5	Silver
C-3101-25-6	M2.5	Black
C-3101-30	M3	Silver
C-3101-30-6	M3	Black
C-3101-40	M4	Silver
C-3101-40-6	M4	Black



LOW PROFILE NUT
DIN 936 - STEEL - 10 PCS

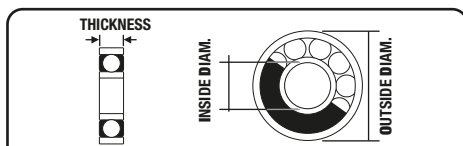
REF	NOMINAL SIZE	COLOR
C-3104-40	M4	Silver
C-3104-50	M5	Silver



HEXAGON NUT
DIN 934 - STEEL - 10 PCS

REF	NOMINAL SIZE	COLOR
C-3103-20-6	M2	Black
C-3103-25-6	M2.5	Black
C-3103-30-6	M3	Black
C-3103-40-6	M4	Black
C-3103-50-6	M5	Black

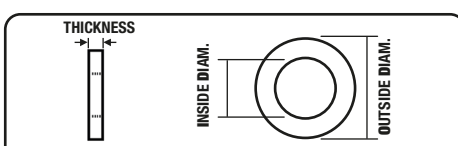
BALL BEARINGS



BALL BEARING
ABEC 3 - STEEL - 2 PCS

REF	ID MM	OD MM	TH MM
C-3611-3-05-08-03	5	8	3
C-3611-3-05-10-04	5	10	4
C-3611-3-06-10-03	6	10	3
C-3611-3-08-16-05	8	16	5
C-3611-3-10-15-04	10	15	4
C-3611-3-12-21-05	12	21	5

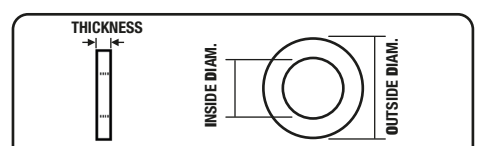
SHIMS



SHIM WASHERS
METRIC - STEEL - 10 PCS

REF	ID MM	OD MM	TH MM
C-3301-04-06-01	4	6	0.1
C-3301-06-08-01	6	8	0.1
C-3301-08-10-01	8	10	0.1
C-3301-13-16-01	13	16	0.1

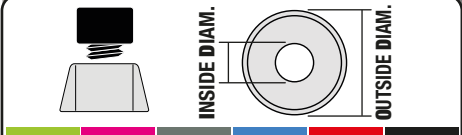
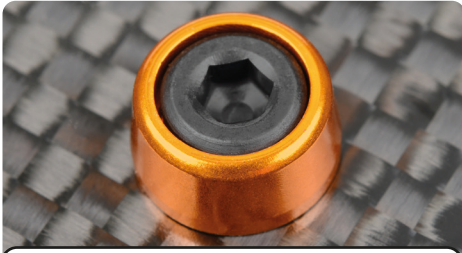
STEELWASHERS



STEEL WASHERS
GALVANIZED STEEL - 10 PCS

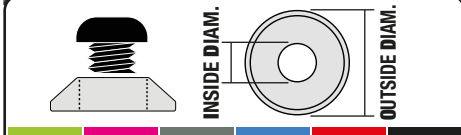
REF	ID MM	OD MM	TH MM
C-3201-30	3.2	7	0.5
C-3201-40	4.3	9	0.8
C-3201-60	6.4	12	1.6

ALUMINIUM WASHERS



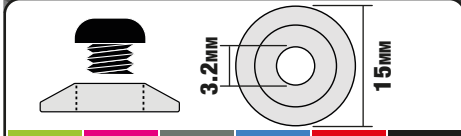
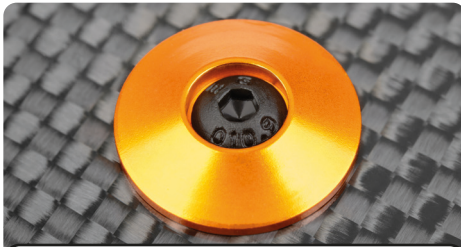
WASHER FOR SOCKET HEAD SCREW
ALUMINIUM - 10 PCS

REF	FOR S/H SCREW	ID MM	OD MM	COLOR
C-3214-20-0	M2	2.2	6	Gold
C-3214-20-1	M2	2.2	6	Green
C-3214-20-2	M2	2.2	6	Purple
C-3214-20-3	M2	2.2	6	Gun
C-3214-20-4	M2	2.2	6	Blue
C-3214-20-5	M2	2.2	6	Red
C-3214-20-6	M2	2.2	6	Black
C-3214-25-0	M2.5	2.7	7	Gold
C-3214-25-1	M2.5	2.7	7	Green
C-3214-25-2	M2.5	2.7	7	Purple
C-3214-25-3	M2.5	2.7	7	Gun
C-3214-25-4	M2.5	2.7	7	Blue
C-3214-25-5	M2.5	2.7	7	Red
C-3214-25-6	M2.5	2.7	7	Black
C-3214-30-0	M3	3.2	8	Gold
C-3214-30-1	M3	3.2	8	Green
C-3214-30-2	M3	3.2	8	Purple
C-3214-30-3	M3	3.2	8	Gun
C-3214-30-4	M3	3.2	8	Blue
C-3214-30-5	M3	3.2	8	Red
C-3214-30-6	M3	3.2	8	Black
C-3214-40-0	M4	4.3	10	Gold
C-3214-40-1	M4	4.3	10	Green
C-3214-40-2	M4	4.3	10	Purple
C-3214-40-3	M4	4.3	10	Gun
C-3214-40-4	M4	4.3	10	Blue
C-3214-40-5	M4	4.3	10	Red
C-3214-40-6	M4	4.3	10	Black
C-3214-50-0	M5	5.3	10	Gold
C-3214-50-1	M5	5.3	10	Green
C-3214-50-2	M5	5.3	10	Purple
C-3214-50-3	M5	5.3	10	Gun
C-3214-50-4	M5	5.3	10	Blue
C-3214-50-5	M5	5.3	10	Red
C-3214-50-6	M5	5.3	10	Black



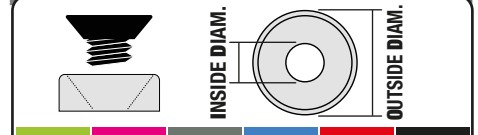
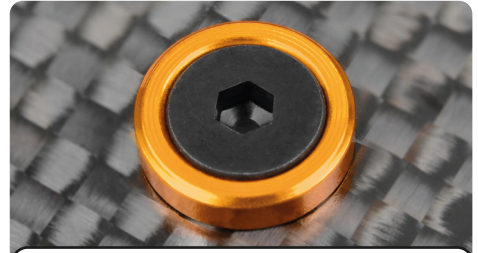
WASHER FOR BUTTON HEAD SCREW
ALUMINIUM - 10 PCS

REF	FOR B/H SCREW	ID MM	OD MM	COLOR
C-3211-30-0	M3	3.2	10	Gold
C-3211-30-1	M3	3.2	10	Green
C-3211-30-2	M3	3.2	10	Purple
C-3211-30-3	M3	3.2	10	Gun
C-3211-30-4	M3	3.2	10	Blue
C-3211-30-5	M3	3.2	10	Red
C-3211-30-6	M3	3.2	10	Black
C-3211-40-0	M4	4.3	12	Gold
C-3211-40-1	M4	4.3	12	Green
C-3211-40-2	M4	4.3	12	Purple
C-3211-40-3	M4	4.3	12	Gun
C-3211-40-4	M4	4.3	12	Blue
C-3211-40-5	M4	4.3	12	Red
C-3211-40-6	M4	4.3	12	Black



WASHER FOR BUTTON HEAD SCREW
ALUMINIUM - 10 PCS

REF	FOR B/H SCREW	ID MM	OD MM	COLOR
C-3212-30-0	M3	3.2	15	Gold
C-3212-30-1	M3	3.2	15	Green
C-3212-30-2	M3	3.2	15	Purple
C-3212-30-3	M3	3.2	15	Gun
C-3212-30-4	M3	3.2	15	Blue
C-3212-30-5	M3	3.2	15	Red
C-3212-30-6	M3	3.2	15	Black



WASHER FOR FLAT HEAD SCREW
ALUMINIUM - 10 PCS

REF	FOR F/H SCREW	ID MM	OD MM	COLOR
C-3213-30-0	M3	3.2	8	Gold
C-3213-30-1	M3	3.2	8	Green
C-3213-30-2	M3	3.2	8	Purple
C-3213-30-3	M3	3.2	8	Gun
C-3213-30-4	M3	3.2	8	Blue
C-3213-30-5	M3	3.2	8	Red
C-3213-30-6	M3	3.2	8	Black
C-3213-40-0	M4	4.3	10	Gold
C-3213-40-1	M4	4.3	10	Green
C-3213-40-2	M4	4.3	10	Purple
C-3213-40-3	M4	4.3	10	Gun
C-3213-40-4	M4	4.3	10	Blue
C-3213-40-5	M4	4.3	10	Red
C-3213-40-6	M4	4.3	10	Black
C-3213-50-0	M5	5.3	12	Gold
C-3213-50-1	M5	5.3	12	Green
C-3213-50-2	M5	5.3	12	Purple
C-3213-50-3	M5	5.3	12	Gun
C-3213-50-4	M5	5.3	12	Blue
C-3213-50-5	M5	5.3	12	Red
C-3213-50-6	M5	5.3	12	Black

DECLARATION OF CONFORMITY

EU-Konformitätserklärung/ Déclaration de Conformité UE

(in accordance with ISO/IEC 17050-1) / (in Übereinstimmung mit ISO/IEC 17050-1) /
(Conformément à la norme ISO/IEC 17050-1)

Description : **PUNISHER 4 - 4S - MONSTER TRUCK 4WD -RTR**
Item Number: **C-00292**

This declaration is issued under the sole responsibility of the manufacturer.
Die alleinige Verantwortung für die Ausstellung dieser Erklärung trägt der Hersteller.
La présente déclaration est établie sous la seule responsabilité du fabricant.

Product(s)/Produkt(e)/ Produit(s) : **PUNISHER 4 - 4S - MONSTER TRUCK 4WD -RTR**

The object of declaration described above is in conformity with the relevant Union harmonization Legislation, specifically the requirements of the specifications listed below, following the provisions of the European RED Directive 2014/53/EU:
Der Gegenstand dieser Erklärung ist konform mit den Harmonisierungsrechtsvorschriften der Europäischen Union, insbesondere mit den unten aufgeführten Bestimmungen, und folgt der europäischen RED Direktive 2014/53/EU:
L'objet de la déclaration décrit ci-dessus est conforme à la législation pertinente en matière d'harmonisation de l'Union européenne, en particulier les exigences des spécifications énumérées ci-dessous, conformément aux dispositions des directives européennes RED 2014/53/EU:

EN 300 440 V2.1.1:2017	EN 301 489-3 V1.6.1:2013
EN 301 489-1 V2.1.1:2017	EN 60950-1:2006+A11:2009+A1:2010+A12:2011+A2:2013
EN 62479:2010	EN 55024:2010+A1:2015
EN 55032:2015	EN 61000-3-3:2013
EN 61000-3-2:2014	

JSP GROUP INTL • Geelseweg, 80 • 2250 Olen • Belgium

Signed for and on behalf of/ Unterzeichnet für und im Namen von/ Signé pour et au nom de :

Place/Ort/Lieu and Date/Datum/Data : **Olen, Belgium, 17 Juni 2024**

Name/Nom: **Stefan Engelen**
Title/Titel/Titre : **Ceo**

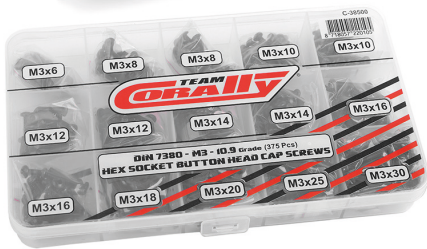
Signature/Unterschrift :




EQUIPMENT AUTHORIZATION is hereby issued to the named GRANTEE JSP GROUP INTL BVBA / CORALLY, and is VALID ONLY for the equipment identified hereon for use under the Commission's Rules and Regulations listed below.

FCC IDENTIFIER : 2ASZJ-C59065
Name of Grantee : JSP GROUP INTL BVBA / CORALLY
Equipment Class : Part 15 Low Power Communication Device Transmitter
Notes : Corally CT-2-S
FCC Rules : 15C
Frequency Range (MHZ) : 2410.0 - 2480.0

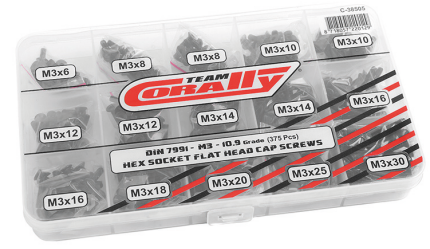
**Discover our range of practical plastic boxes
with a selection of the most commonly used Screws, Nuts, Shims, Washers.**



C-38500
Screw Set M3 - Hex Button Head - DIN 7380 - Steel Black - 10.9 Grade - 15 Sizes - 375 pcs



C-38501
Screw Set M4 - Hex Button Head - DIN 7380 - Steel Black - 10.9 Grade - 15 Sizes - 265 pcs



C-38505
Screw Set M3 - Hex Flat Head - DIN 7991 - Steel Black - 10.9 Grade - 15 Sizes - 375 pcs



C-38506
Screw Set M4 - Hex Flat Head - DIN 7991 - Steel Black - 10.9 Grade - 15 Sizes - 265 pcs



C-38510
Screw Set M3 - Hex Socket Head - DIN912 - Steel Black - 12.9 Grade - 15 Sizes - 375 pcs



C-38511
Screw Set M4 - Hex Socket Head - DIN912 - Steel Black - 12.9 Grade - 15 Sizes - 265 pcs



C-38515
Screw Set - Set Screws - M3 - M4 - M5 - DIN 916 - Steel Black - 12.9 Grade - 10 Sizes - 370 pcs



C-38516
Nuts - Lock Nuts - Washers Set - M2 - M2.5 - M3 - M4 - Steel Black - 10 Sizes - 320 pcs



970 pcs

C-38516
Universal Sport Car Series - Screws - Nuts Set - 34 Sizes - 970 pcs



C-38520
Shim Ring Set - Steel- 15 Sizes - 375 pcs

More info



www.corally.com

WWW.CORALLY.COM

TEAM
CORALLY

WORLD CHAMPIONS



WWW.CORALLY.COM

Team Corally is a registered trademark licensed to
JSP Group Intl bvba • Geelseweg 80 • B-2250 OLEN • Belgium
Tel: +32 14 25 92 94 • Info@corally.com